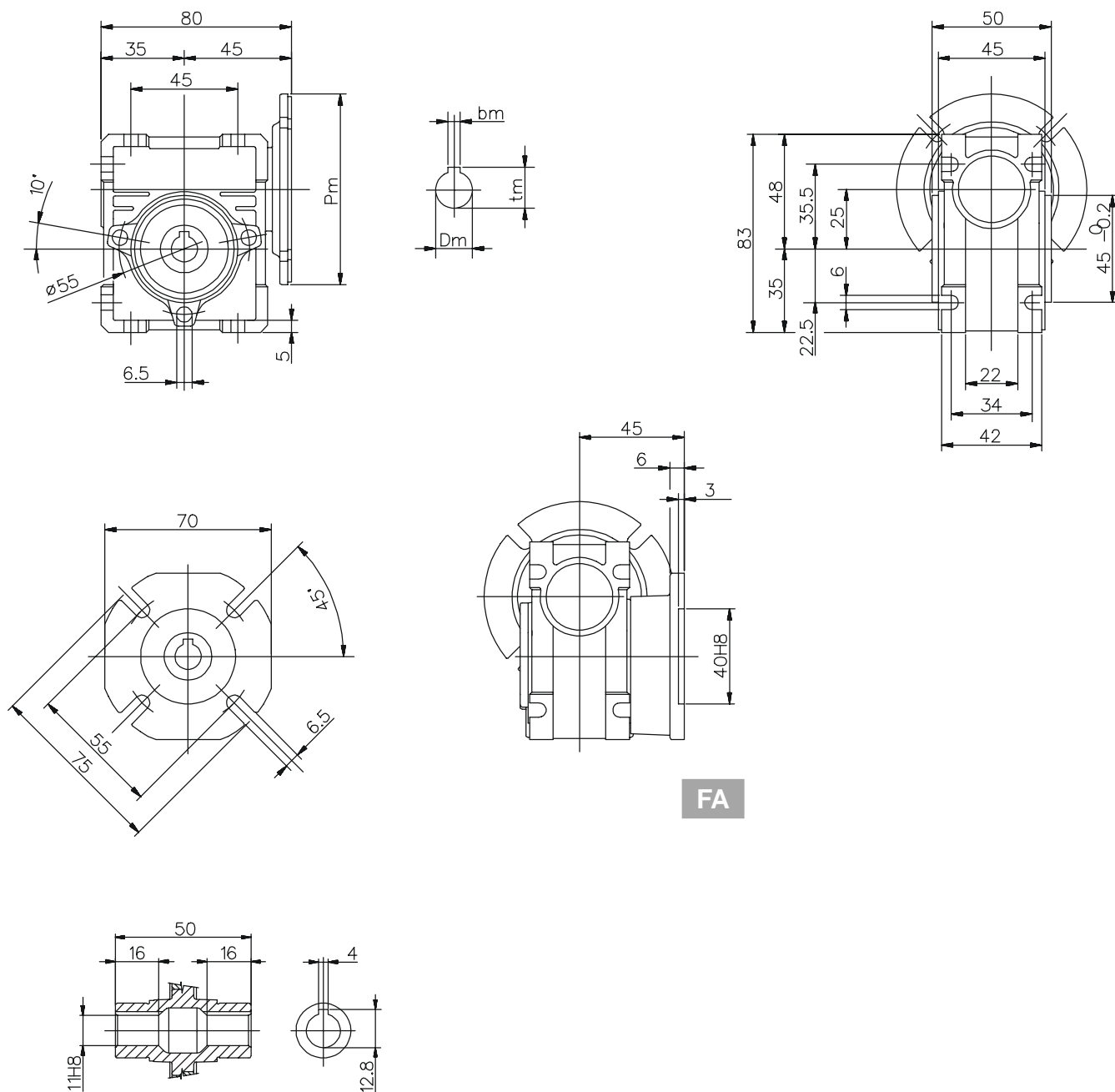


025

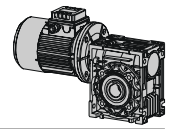
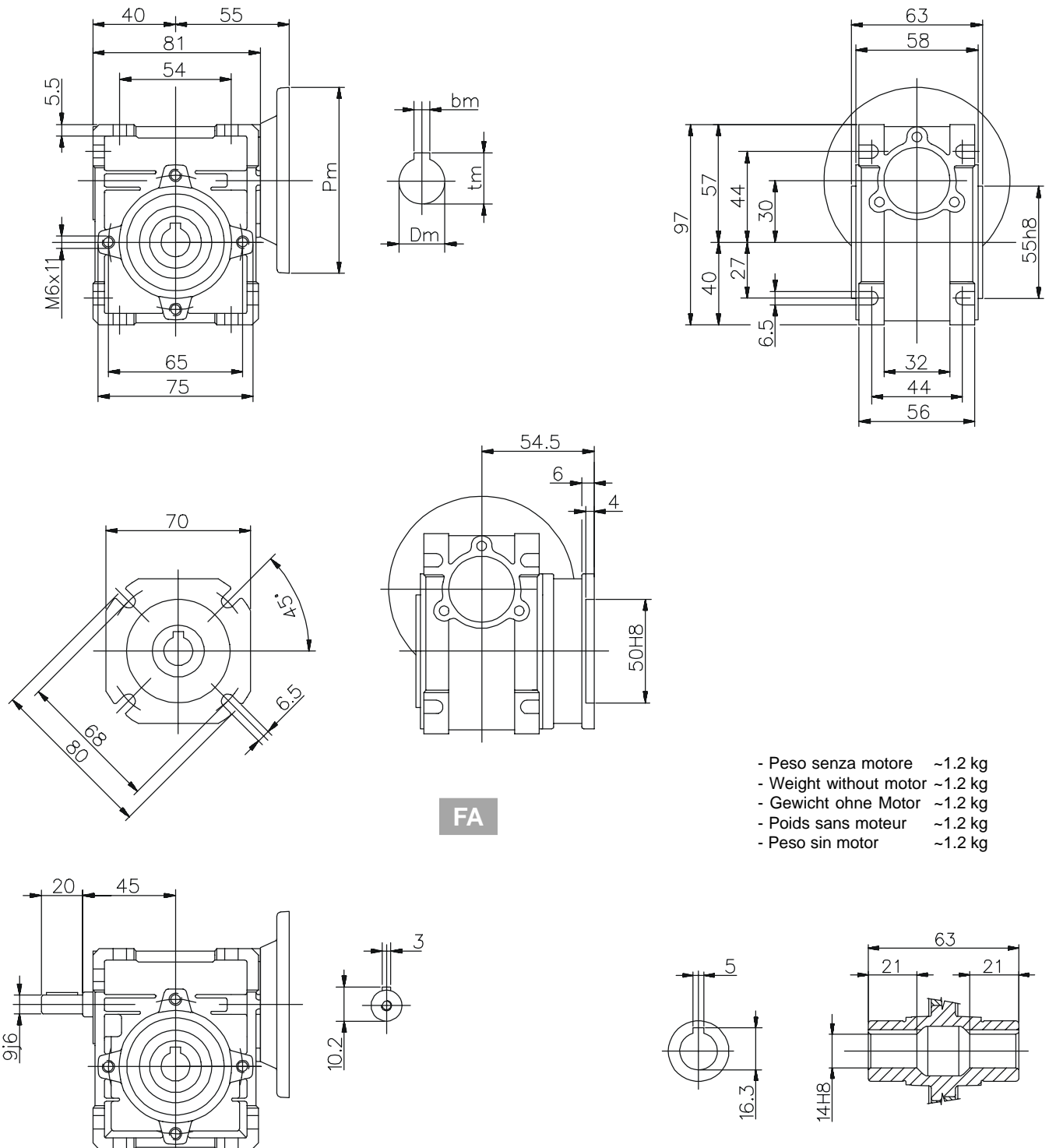
Dimensioni / Dimensions / Abmessungen / Encombremets / Dimensiones



FA

- Peso senza motore ~0.7 kg
- Weight without motor ~0.7 kg
- Gewicht ohne Motor ~0.7 kg
- Poids sans moteur ~0.7 kg
- Peso sin motor ~0.7 kg

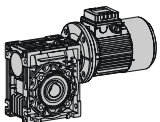
Per le dimensioni relative alla zona attacco motore (Pm, Dm, bm, tm) fare riferimento alla tabella di pag. 303.
 For the dimensions concerning the motor connection area (Pm, Dm, bm, tm) please refer to the table shown at page 303.
 Zu den Abmessungen des Motoranschlußflansches (Pm, Dm, bm, tm) siehe Tabelle auf Seite 303.
 Pour les dimensions concernant la zone de montage du moteur (Pm, Dm, bm, tm) lire SVP le tableau à la page 303.
 Para las magnitudes correspondientes a la zona del motor (Pm, Dm, bm, tm) consulte la tabla de la página 303.


NMRV

FA

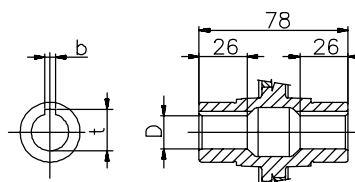
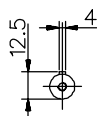
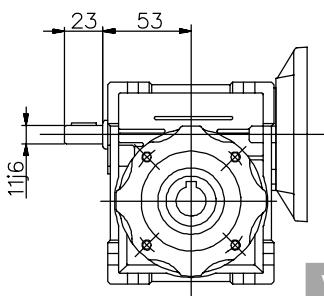
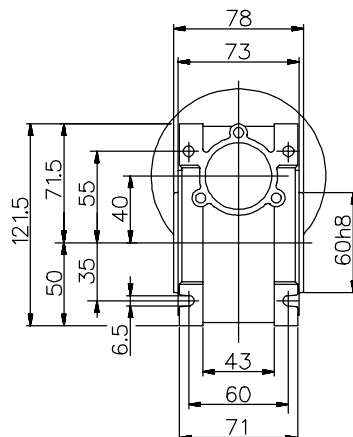
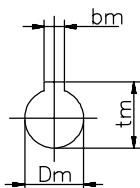
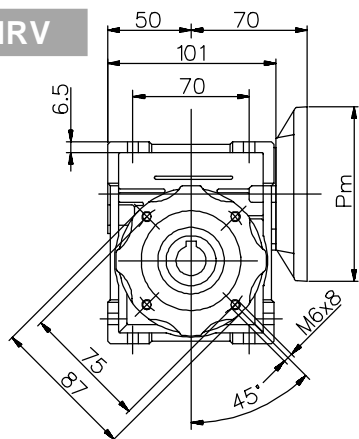
- Peso senza motore ~1.2 kg
- Weight without motor ~1.2 kg
- Gewicht ohne Motor ~1.2 kg
- Poids sans moteur ~1.2 kg
- Peso sin motor ~1.2 kg

VS

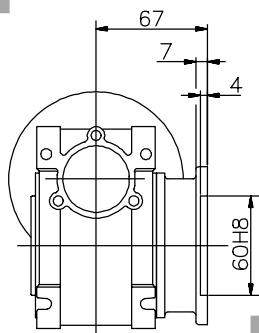
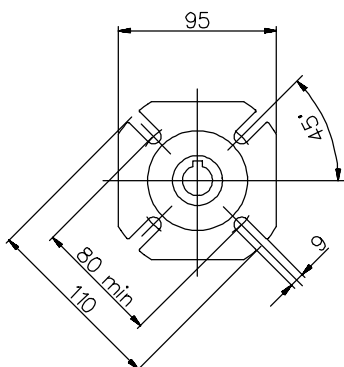
Per le dimensioni relative alla zona attacco motore (Pm, Dm, bm, tm) fare riferimento alla tabella di pag. 303.
 For the dimensions concerning the motor connection area (Pm, Dm, bm, tm) please refer to the table shown at page 303.
 Zu den Abmessungen des Motoranschlußflansches (Pm, Dm, bm, tm) siehe Tabelle auf Seite 303.
 Pour les dimensions concernant la zone de montage du moteur (Pm, Dm, bm, tm) lire SVP le tableau à la page 303.
 Para las magnitudes correspondientes a la zona del motor (Pm, Dm, bm, tm) consulte la tabla de la página 303.



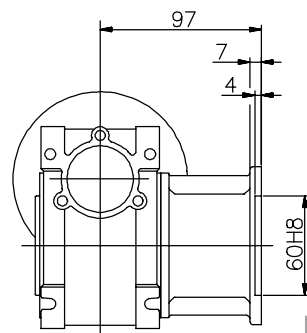
NMRV



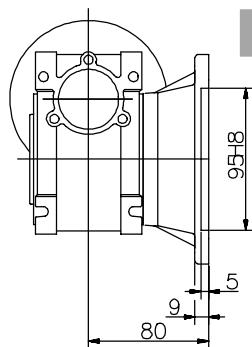
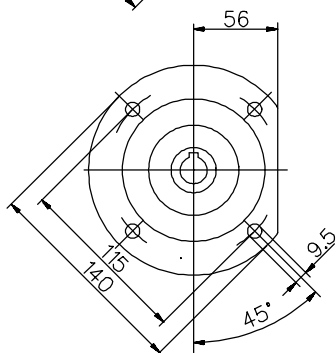
VS



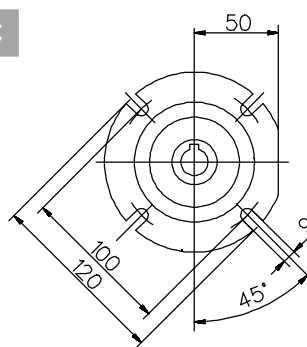
FA



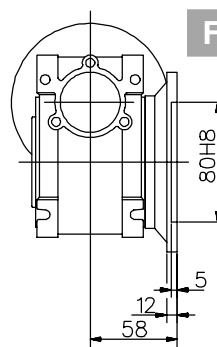
FB



FC



FD

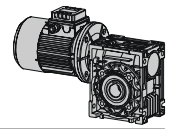
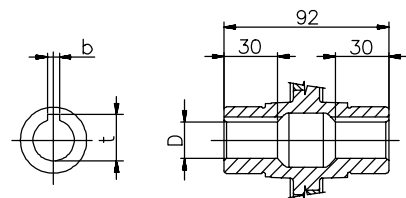
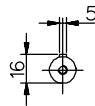
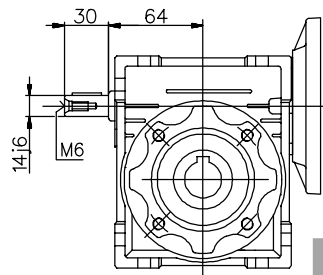
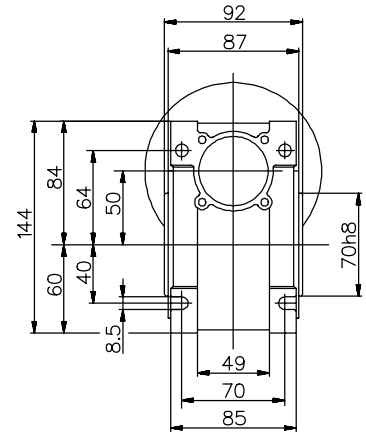
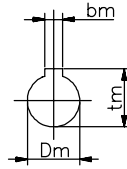
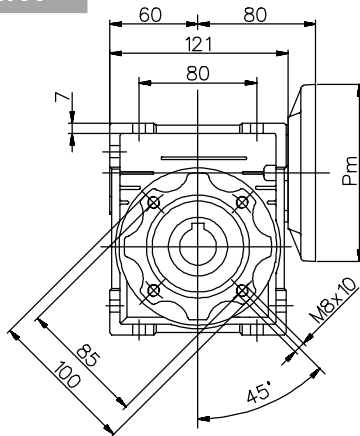
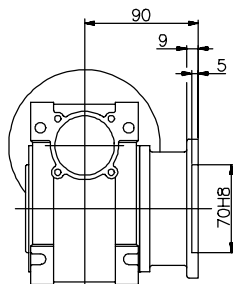
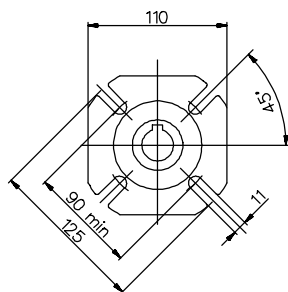
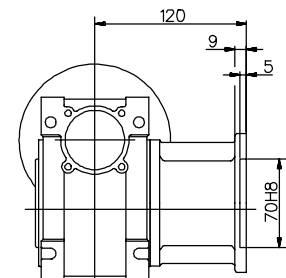
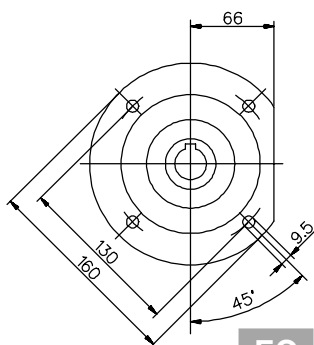
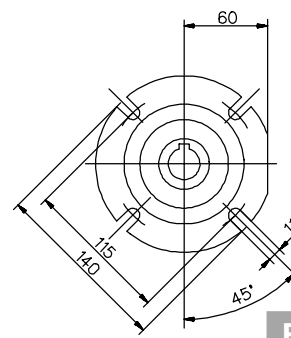
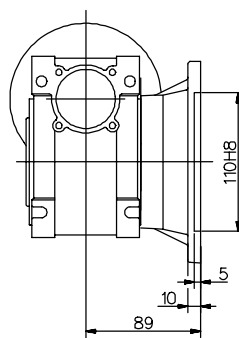
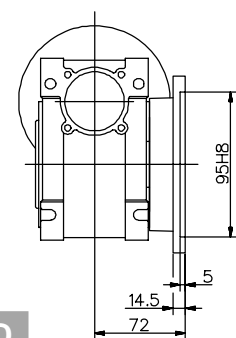


- (..) Solo su richiesta
- (..) Only on request
- (..) Auf Wunsch
- (..) Seulement sur demande
- (..) Sólo bajo pedido

- Peso senza motore ~2.3 kg
- Weight without motor ~2.3 kg
- Gewicht ohne Motor ~2.3 kg
- Poids sans moteur ~2.3 kg
- Peso sin motor ~2.3 kg

Uscita / Output / Abtrieb / Sortie / Salida		
D H8	b	t
18	6	20,8
(19)	(6)	(21,8)

Per le dimensioni relative alla zona attacco motore (Pm, Dm, bm, tm) fare riferimento alla tabella di pag. 303.
 For the dimensions concerning the motor connection area (Pm, Dm, bm, tm) please refer to the table shown at page 303.
 Zu den Abmessungen des Motoranschlußflansches (Pm, Dm, bm, tm) siehe Tabelle auf Seite 303.
 Pour les dimensions concernant la zone de montage du moteur (Pm, Dm, bm, tm) lire SVP le tableau à la page 303.
 Para las magnitudes correspondientes a la zona del motor (Pm, Dm, bm, tm) consulte la tabla de la página 303.


NMRV

VS

FA

FB

FC

FD


(..) Solo su richiesta
 (..) Only on request
 (..) Auf Wunsch
 (..) Seulement sur demande
 (..) Sólo bajo pedido

- Peso senza motore ~3.5 kg
 - Weight without motor ~3.5 kg
 - Gewicht ohne Motor ~3.5 kg
 - Poids sans moteur ~3.5 kg
 - Peso sin motor ~3.5 kg

Uscita / Output / Abtrieb / Sortie / Salida		
D H8	b	t
25	8	28,3
(24)	(8)	(27,3)

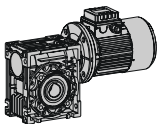
Per le dimensioni relative alla zona attacco motore (Pm, Dm, bm, tm) fare riferimento alla tabella di pag. 303.

For the dimensions concerning the motor connection area (Pm, Dm, bm, tm) please refer to the table shown at page 303.

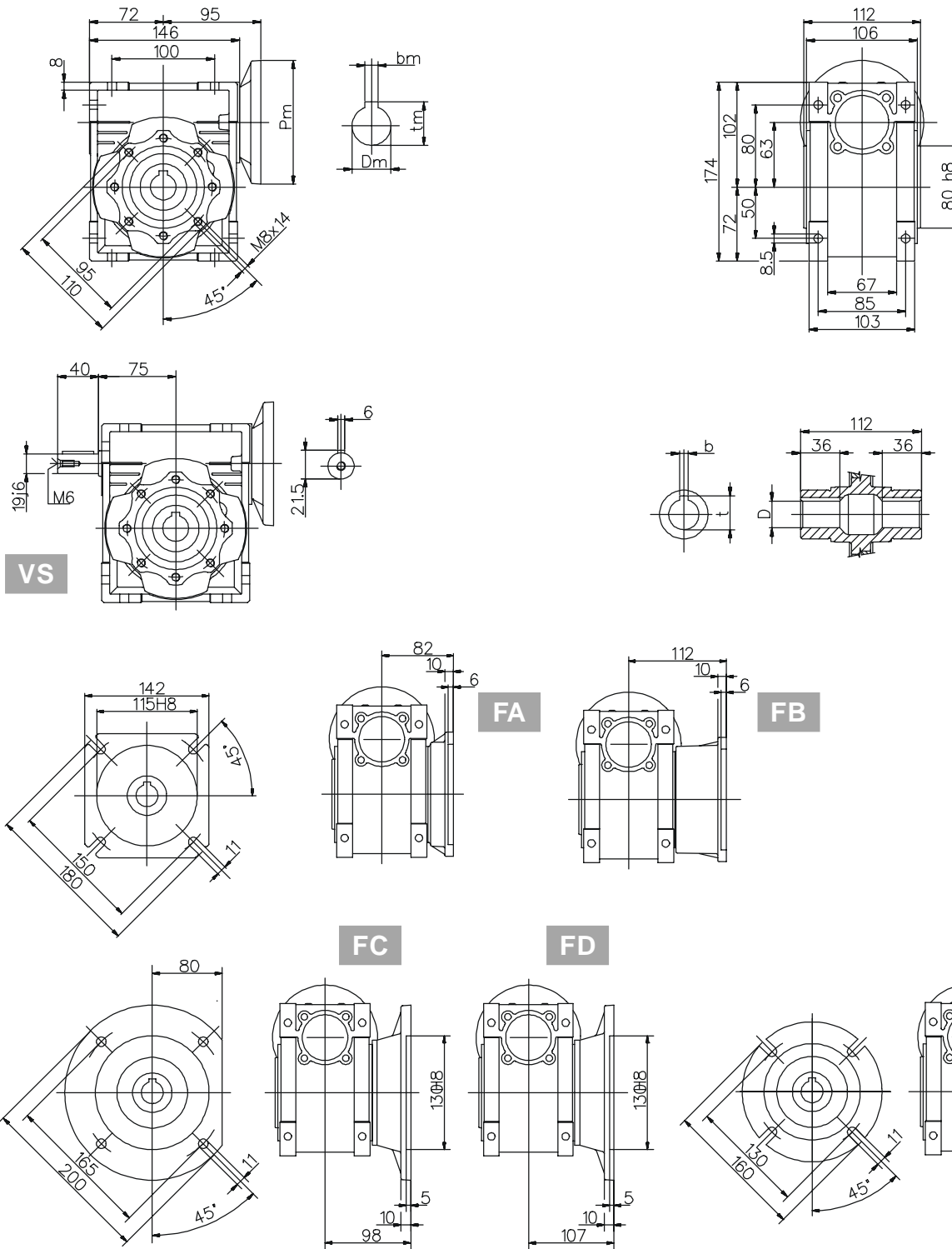
Zu den Abmessungen des Motoranschlußflansches (Pm, Dm, bm, tm) siehe Tabelle auf Seite 303.

Pour les dimensions concernant la zone de montage du moteur (Pm, Dm, bm, tm) lire SVP le tableau à la page 303.

Para las magnitudes correspondientes a la zona del motor (Pm, Dm, bm, tm) consulte la tabla de la página 303.



NMRV

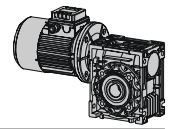
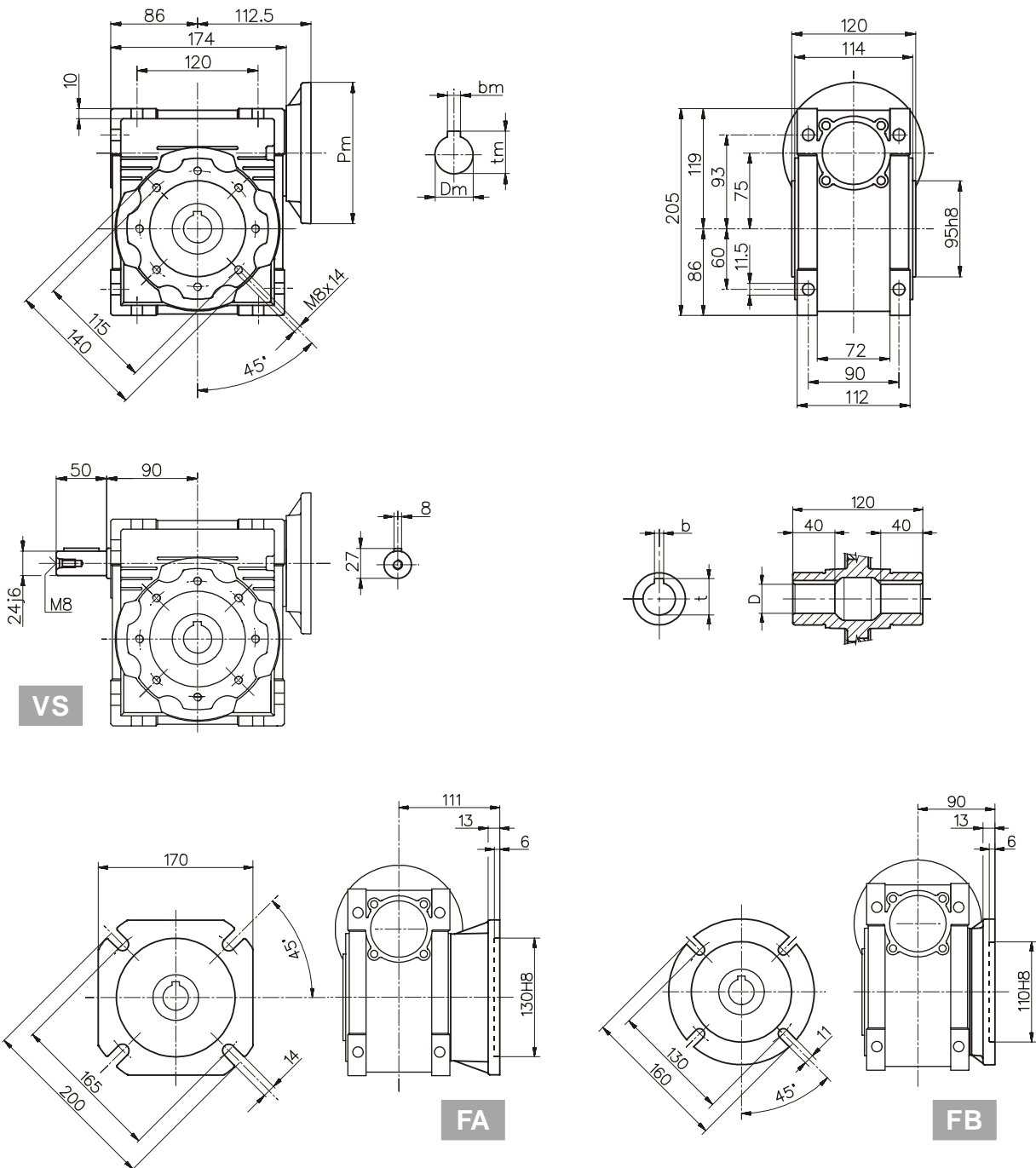


Uscita / Output / Abtrieb / Sortie / Salida		
D H8	b	t
25	8	28,3
(28)	(8)	(31,3)

- (..) Solo su richiesta
- (..) Only on request
- (..) Auf Wunsch
- (..) Seulement sur demande
- (..) Sólo bajo pedido

- Peso senza motore ~6.2 kg
- Weight without motor ~6.2 kg
- Gewicht ohne Motor ~6.2 kg
- Poids sans moteur ~6.2 kg
- Peso sin motor ~6.2 kg

Per le dimensioni relative alla zona attacco motore (Pm, Dm, bm, tm) fare riferimento alla tabella di pag. 303.
 For the dimensions concerning the motor connection area (Pm, Dm, bm, tm) please refer to the table shown at page 303.
 Zu den Abmessungen des Motoranschlußflansches (Pm, Dm, bm, tm) siehe Tabelle auf Seite 303.
 Pour les dimensions concernant la zone de montage du moteur (Pm, Dm, bm, tm) lire SVP le tableau à la page 303.
 Para las magnitudes correspondientes a la zona del motor (Pm, Dm, bm, tm) consulte la tabla de la página 303.

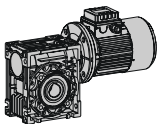

NMRV


Uscita / Output / Abtrieb / Sortie / Salida		
D H8	b	t
28	8	31,3
(35)	(10)	(38,3)

(..) Solo su richiesta
 (..) Only on request
 (..) Auf Wunsch
 (..) Seulement sur demande
 (..) Sólo bajo pedido

- Peso senza motore ~9 kg
 - Weight without motor ~9 kg
 - Gewicht ohne Motor ~9 kg
 - Poids sans moteur ~9 kg
 - Peso sin motor ~9 kg

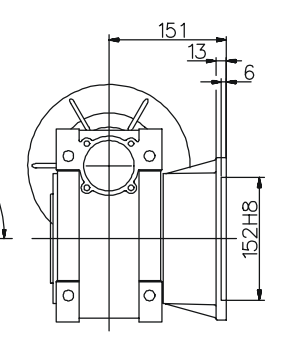
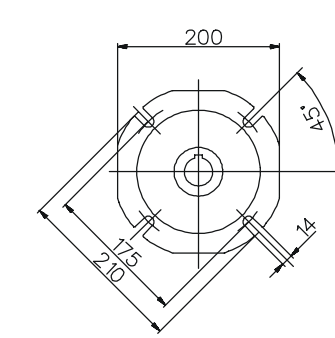
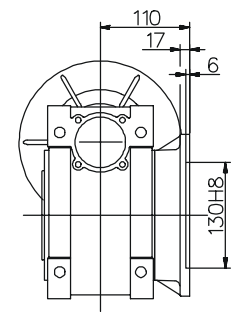
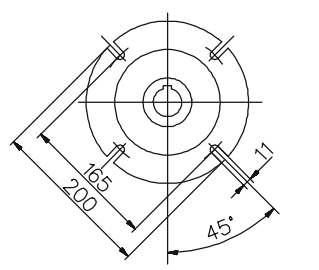
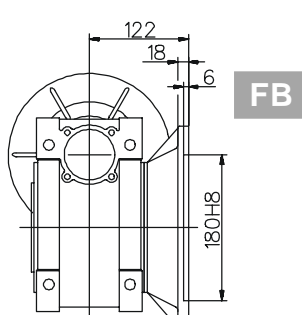
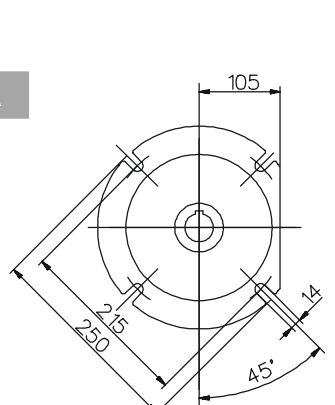
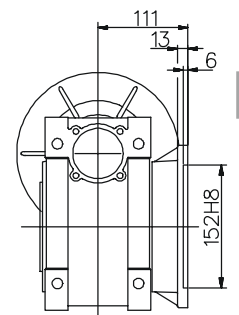
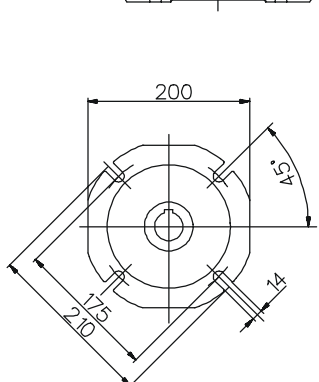
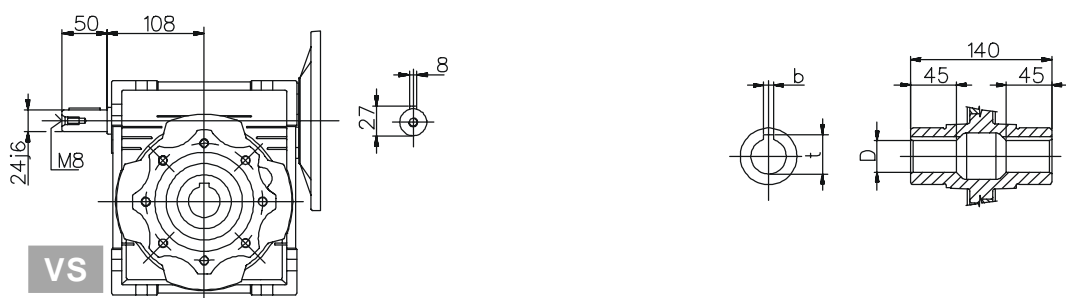
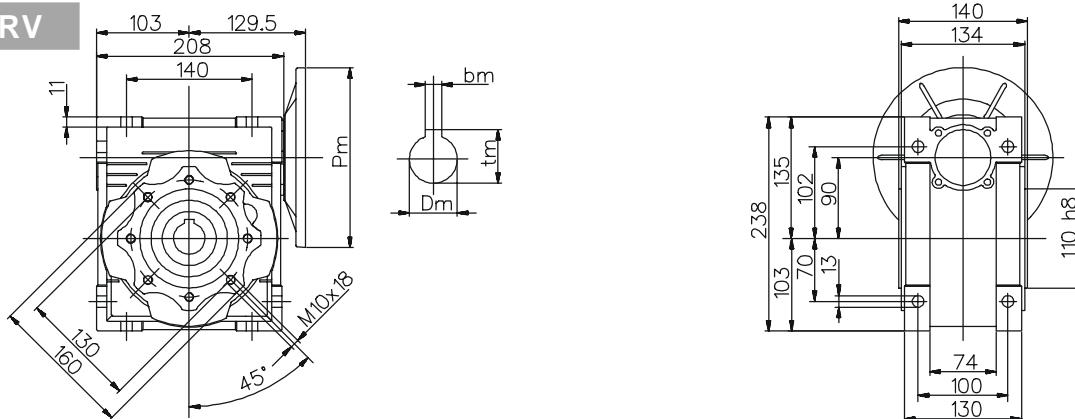
Per le dimensioni relative alla zona attacco motore (Pm, Dm, bm, tm) fare riferimento alla tabella di pag. 303.
 For the dimensions concerning the motor connection area (Pm, Dm, bm, tm) please refer to the table shown at page 303.
 Zu den Abmessungen des Motoranschlußflansches (Pm, Dm, bm, tm) siehe Tabelle auf Seite 303.
 Pour les dimensions concernant la zone de montage du moteur (Pm, Dm, bm, tm) lire SVP le tableau à la page 303.
 Para las magnitudes correspondientes a la zona del motor (Pm, Dm, bm, tm) consulte la tabla de la página 303.



090

Dimensioni / Dimensions / Abmessungen / Encombremets / Dimensiones

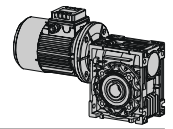
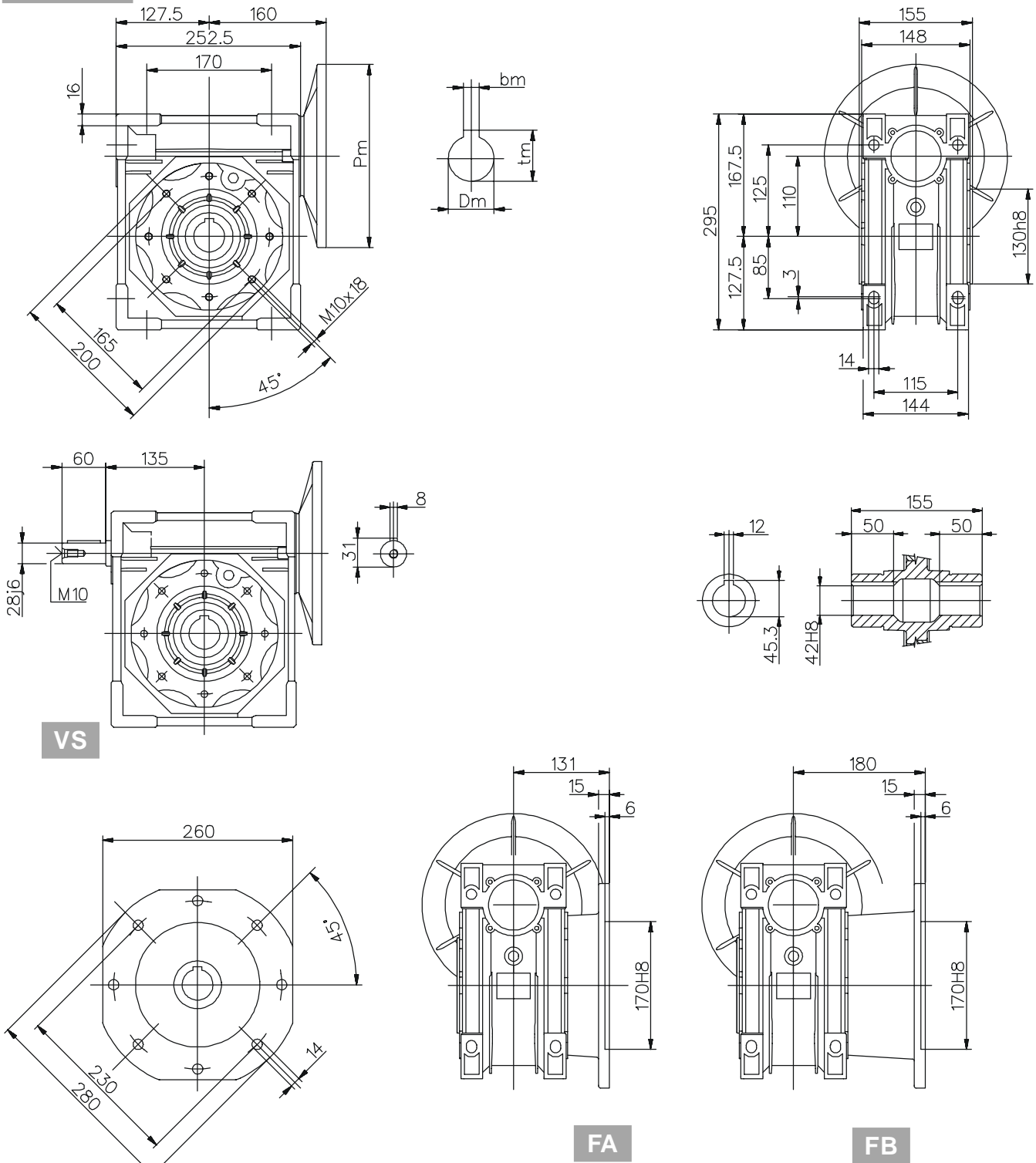
NMRV



Uscita / Output / Abtrieb / Sortie / Salida		
D H8	b	t
35	10	38,3
(38)	(10)	(41,3)

- (..) Solo su richiesta
- (..) Only on request
- (..) Auf Wunsch
- (..) Seulement sur demande
- (..) Sólo bajo pedido
- Peso senza motore ~13 kg
- Weight without motor ~13 kg
- Gewicht ohne Motor ~13 kg
- Poids sans moteur ~13 kg
- Peso sin motor ~13 kg

Per le dimensioni relative alla zona attacco motore (Pm, Dm, bm, tm) fare riferimento alla tabella di pag. 303.
 For the dimensions concerning the motor connection area (Pm, Dm, bm, tm) please refer to the table shown at page 303.
 Zu den Abmessungen des Motoranschlußflansches (Pm, Dm, bm, tm) siehe Tabelle auf Seite 303.
 Pour les dimensions concernant la zone de montage du moteur (Pm, Dm, bm, tm) lire SVP le tableau à la page 303.
 Para las magnitudes correspondientes a la zona del motor (Pm, Dm, bm, tm) consulte la tabla de la página 303.


NMRV


- Peso senza motore ~21 kg
- Weight without motor ~21 kg
- Gewicht ohne Motor ~21 kg
- Poids sans moteur ~21 kg
- Peso sin motor ~21 kg

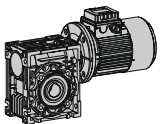
Per le dimensioni relative alla zona attacco motore (Pm, Dm, bm, tm) fare riferimento alla tabella di pag. 303.

For the dimensions concerning the motor connection area (Pm, Dm, bm, tm) please refer to the table shown at page 303.

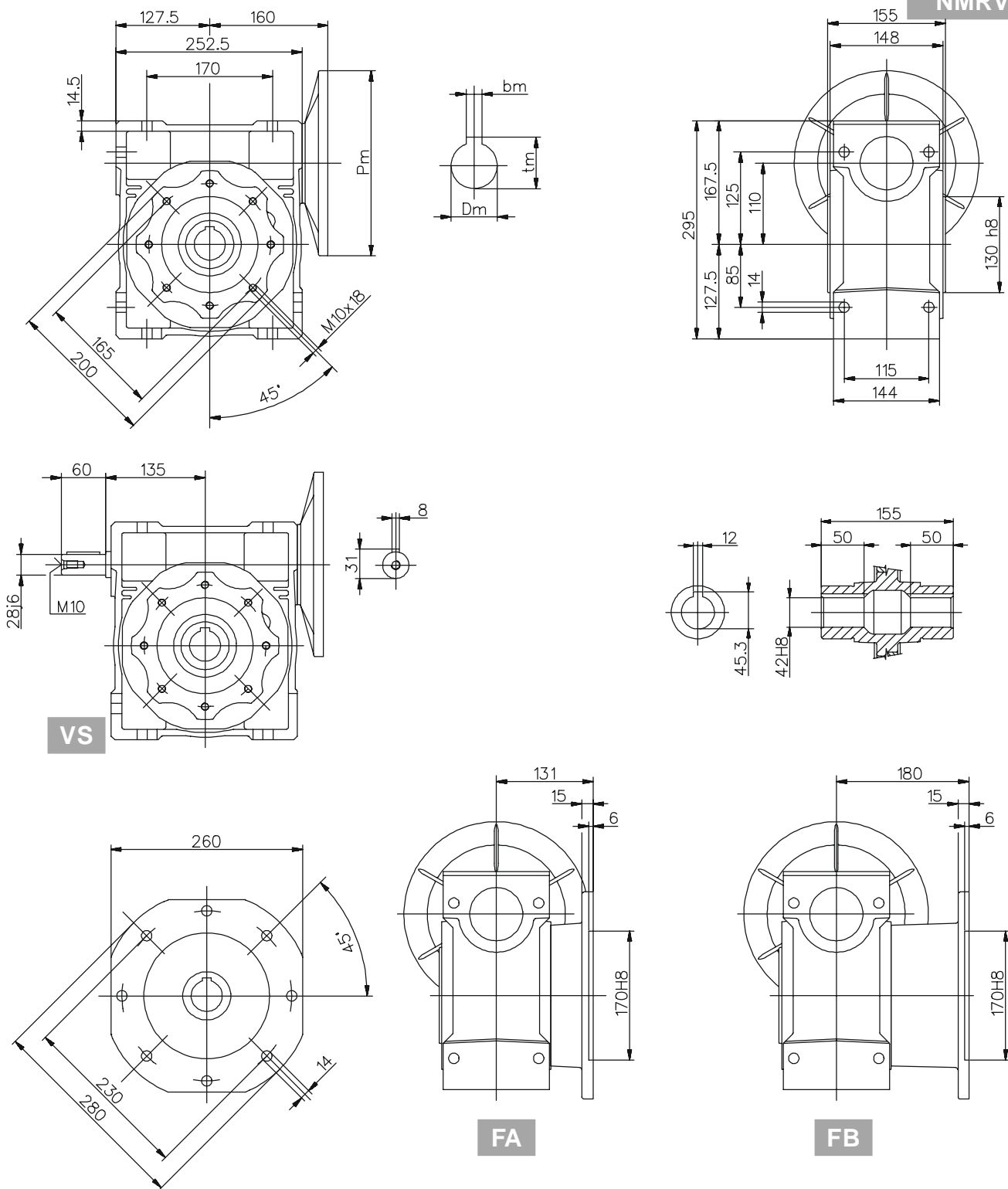
Zu den Abmessungen des Motoranschlußflansches (Pm, Dm, bm, tm) siehe Tabelle auf Seite 303.

Pour les dimensions concernant la zone de montage du moteur (Pm, Dm, bm, tm) lire SVP le tableau à la page 303.

Para las magnitudes correspondientes a la zona del motor (Pm, Dm, bm, tm) consulte la tabla de la página 303.



NMRV



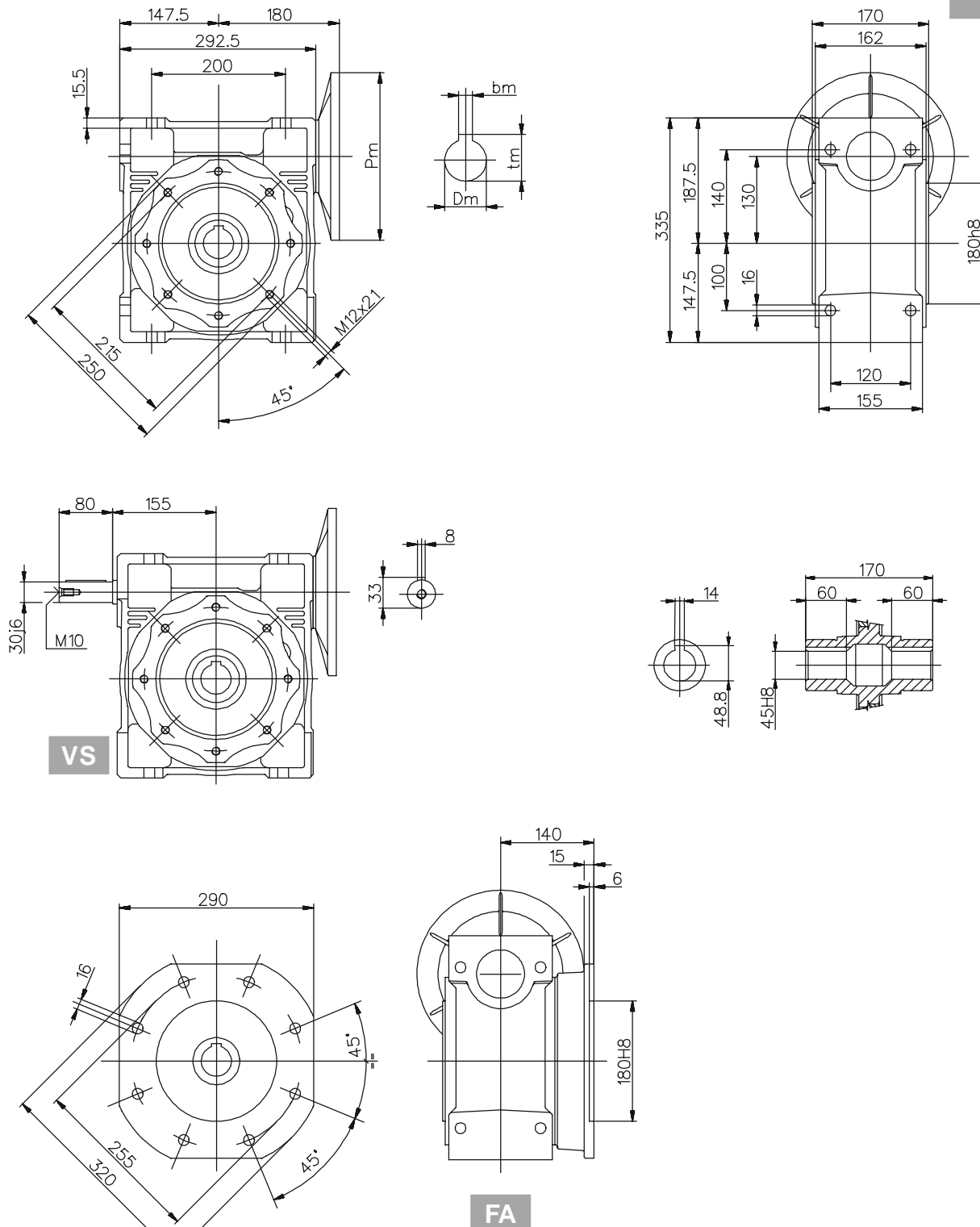
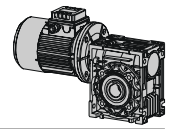
VS

FA

FB

- Peso senza motore ~35 kg
- Weight without motor ~35 kg
- Gewicht ohne Motor ~35 kg
- Poids sans moteur ~35 kg
- Peso sin motor ~35 kg

Per le dimensioni relative alla zona attacco motore (Pm, Dm, bm, tm) fare riferimento alla tabella di pag. 303.
 For the dimensions concerning the motor connection area (Pm, Dm, bm, tm) please refer to the table shown at page 303.
 Zu den Abmessungen des Motoranschlußflansches (Pm, Dm, bm, tm) siehe Tabelle auf Seite 303.
 Pour les dimensions concernant la zone de montage du moteur (Pm, Dm, bm, tm) lire SVP le tableau à la page 303.
 Para las magnitudes correspondientes a la zona del motor (Pm, Dm, bm, tm) consulte la tabla de la página 303.



- Peso senza motore ~48 kg
- Weight without motor ~48 kg
- Gewicht ohne Motor ~48 kg
- Poids sans moteur ~48 kg
- Peso sin motor ~48 kg

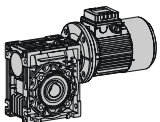
Per le dimensioni relative alla zona attacco motore (Pm, Dm, bm, tm) fare riferimento alla tabella di pag. 303.

For the dimensions concerning the motor connection area (Pm, Dm, bm, tm) please refer to the table shown at page 303.

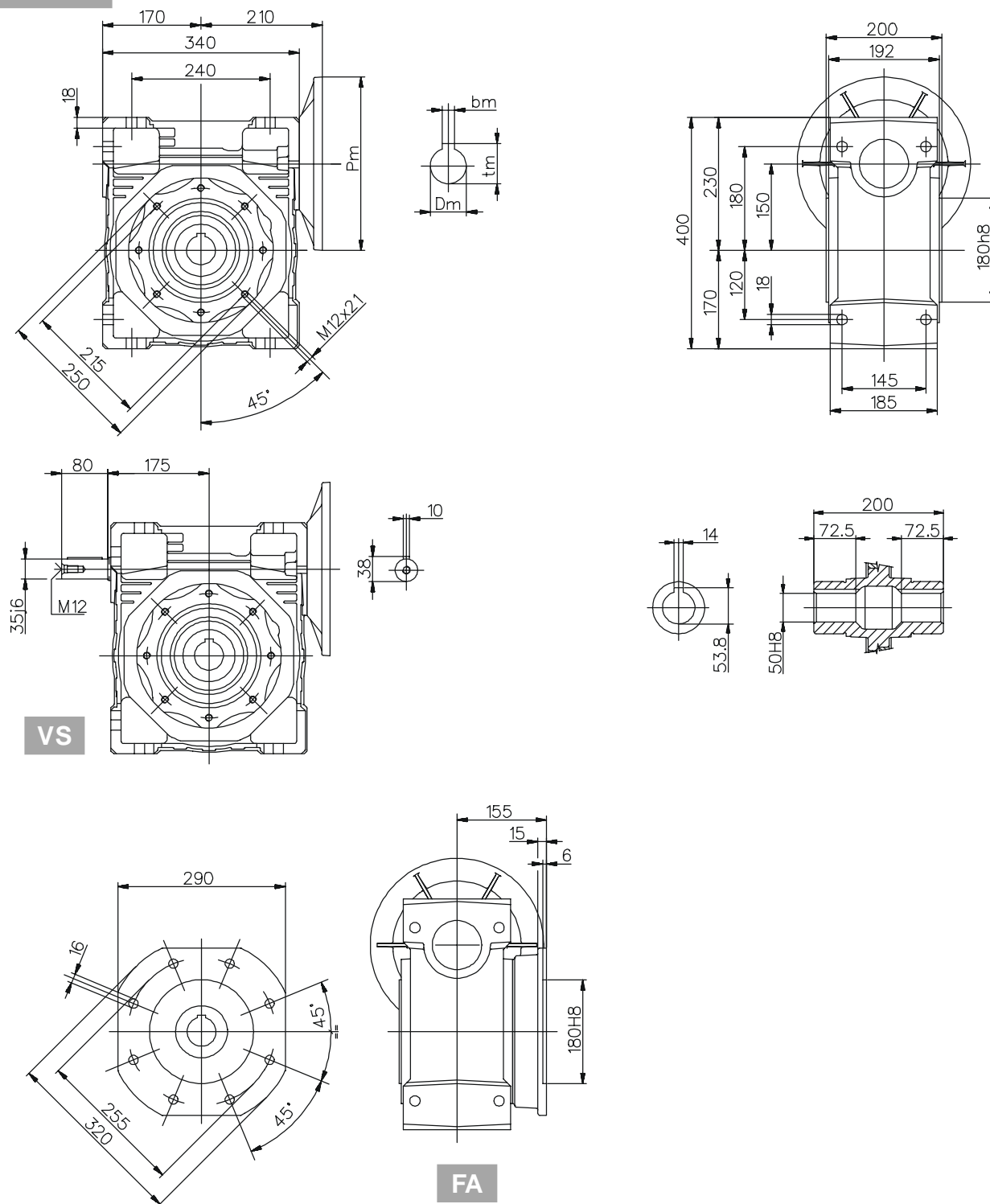
Zu den Abmessungen des Motoranschlußflansches (Pm, Dm, bm, tm) siehe Tabelle auf Seite 303.

Pour les dimensions concernant la zone de montage du moteur (Pm, Dm, bm, tm) lire SVP le tableau à la page 303.

Para las magnitudes correspondientes a la zona del motor (Pm, Dm, bm, tm) consulte la tabla de la página 303.



NMRV

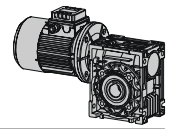


VS

FA

- Peso senza motore ~84 kg
- Weight without motor ~84 kg
- Gewicht ohne Motor ~84 kg
- Poids sans moteur ~84 kg
- Peso sin motor ~84 kg

Per le dimensioni relative alla zona attacco motore (Pm, Dm, bm, tm) fare riferimento alla tabella di pag. 303.
 For the dimensions concerning the motor connection area (Pm, Dm, bm, tm) please refer to the table shown at page 303.
 Zu den Abmessungen des Motoranschlußflansches (Pm, Dm, bm, tm) siehe Tabelle auf Seite 303.
 Pour les dimensions concernant la zone de montage du moteur (Pm, Dm, bm, tm) lire SVP le tableau à la page 303.
 Para las magnitudes correspondientes a la zona del motor (Pm, Dm, bm, tm) consulte la tabla de la página 303.



PC + NMRV Dimensioni / Dimensions / Abmessungen / Encombremets / Dimensiones

- Per le dimensioni relative alla flangia di uscita, fare riferimento al dimensionale NMRV della grandezza relativa.
- For the dimensions of the output flanges, please consider the drawing of relevant NMRV size.
- Die Maße der Abtriebsflansche, sind der Maßzeichnung des NMRV der entsprechenden Größe zu entnehmen.
- Pour les dimensions relatives aux brides de sortie, nous vous prions de vous référer au dessin NMRV dans la taille désirée.
- Paras las cotas correspondientes a la brida de salida, hacer referencia a las dimensiones NMRV del tamaño correspondiente.

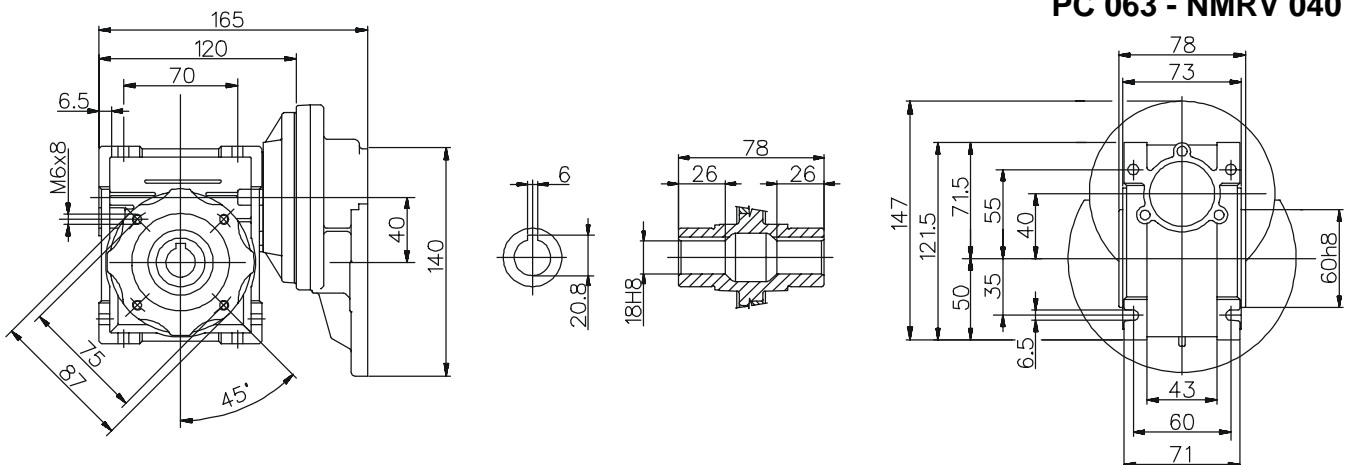
- Per le dimensioni relative agli alberi cavi in versione opzionale, fare riferimento al dimensionale NMRV della grandezza relativa.
- For the dimensions of the hollow shafts in option, please consider the drawing of relevant NMRV size.
- Die Maße der auf Anfrage lieferbaren Hohlwellen sind der Maßzeichnung des NMRV der entsprechenden Größe zu entnehmen.
- Pour les dimensions relatives aux arbres creux en version optionelle, nous vous prions de vous référer au dessin NMRV dans la taille désirée.
- Paras las cotas correspondientes a los ejes huecos en la version opcional, hacer referencia a las dimensiones NMRV del tamaño correspondiente.

- Per le dimensioni relative alla vite bisorgente, fare riferimento al dimensionale NMRV della grandezza relativa.
- For the dimensions of the double extension worm shafts, please consider the drawing of relevant NMRV size.
- Die Maße des doppelten Schneckenwellenendes sind der Maßzeichnung des NMRV der entsprechenden Größe zu entnehmen.
- Pour les dimensions relatives aux vis sans fin avec double sorties, nous vous prions de vous référer au dessin NMRV dans la taille désirée.
- Paras las cotas correspondientes al tornillo sinfin prolongado, hacer referencia a las dimensiones NMRV del tamaño correspondiente.

Dimensioni / Dimensions / Abmessungen / Encombremets / Dimensiones

063-040

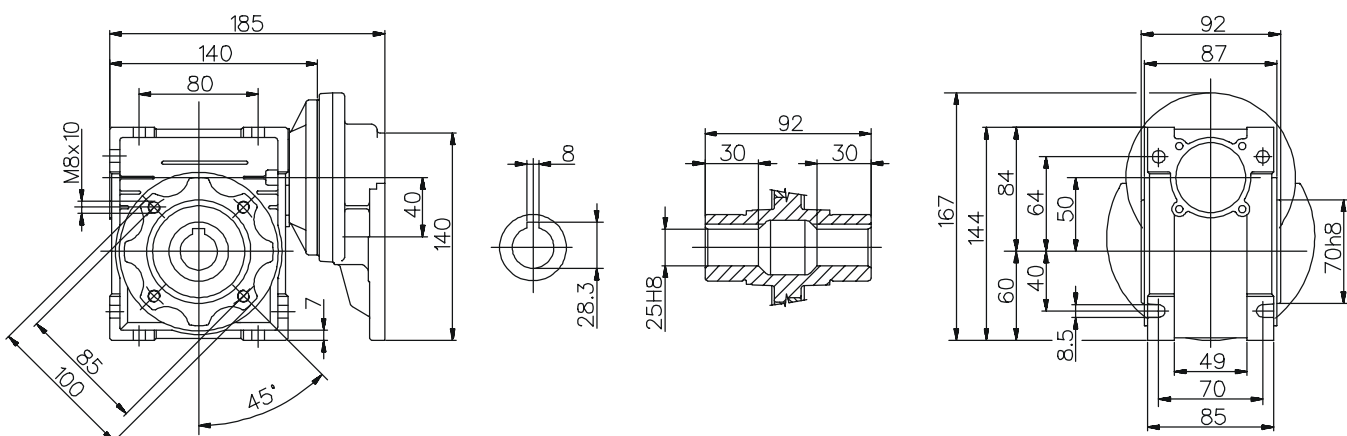
PC 063 - NMRV 040

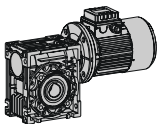


Dimensioni / Dimensions / Abmessungen / Encombremets / Dimensiones

063-050

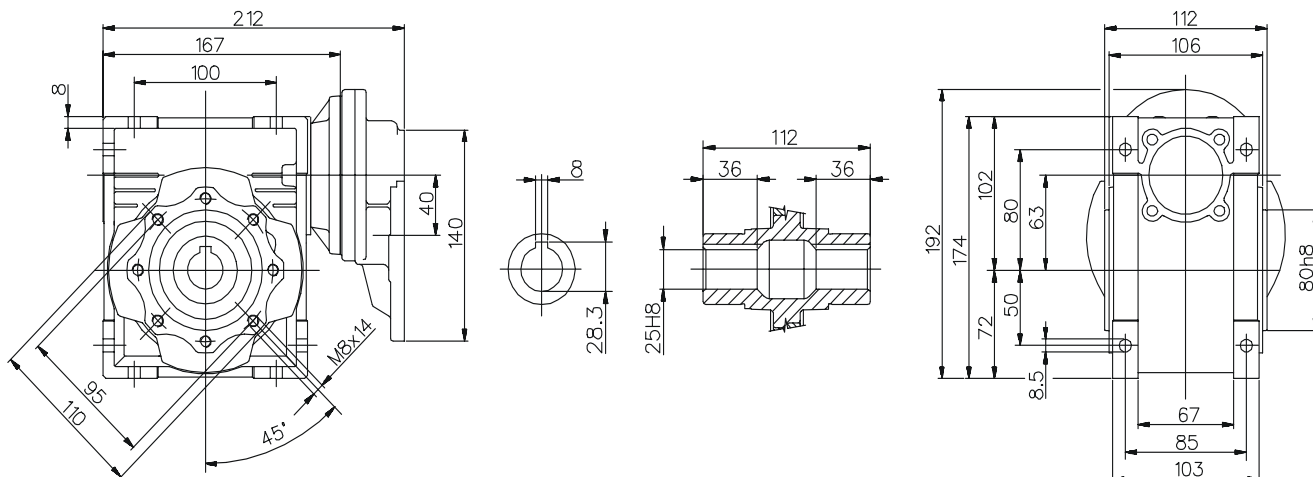
PC 063 - NMRV 050





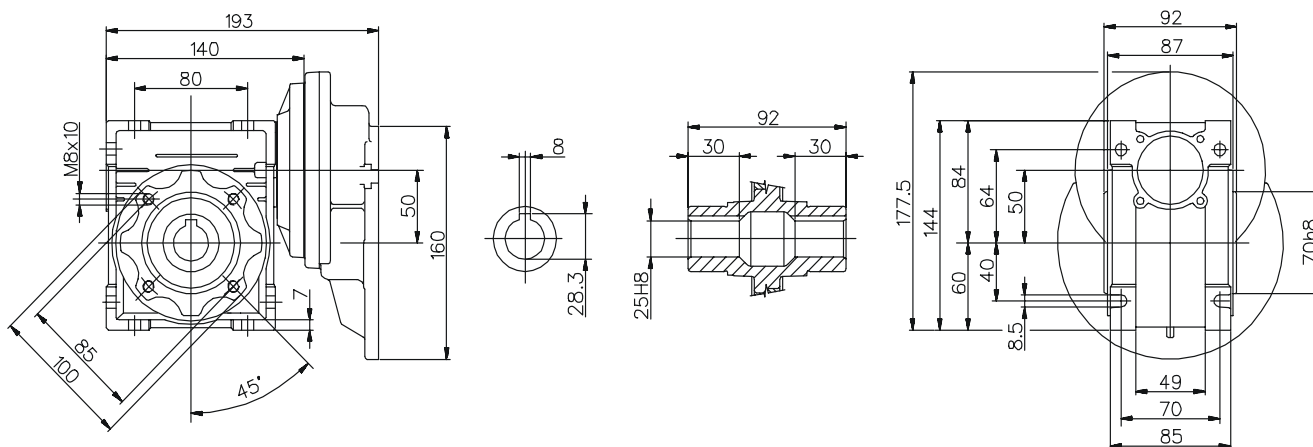
063-063 Dimensioni / Dimensions / Abmessungen / Encombremets / Dimensiones

PC 063 - NMRV 063



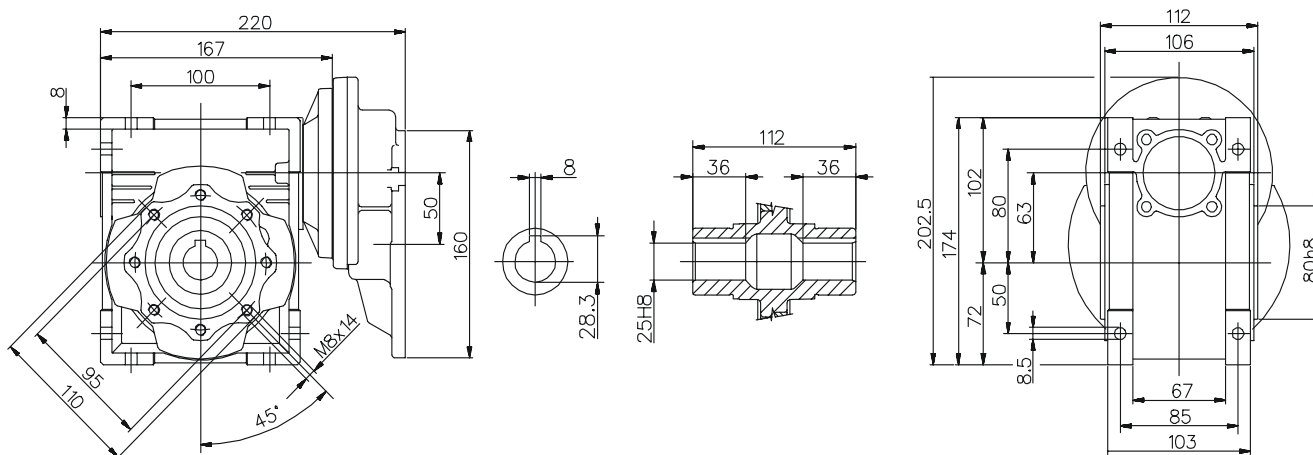
071-050 Dimensioni / Dimensions / Abmessungen / Encombremets / Dimensiones

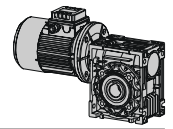
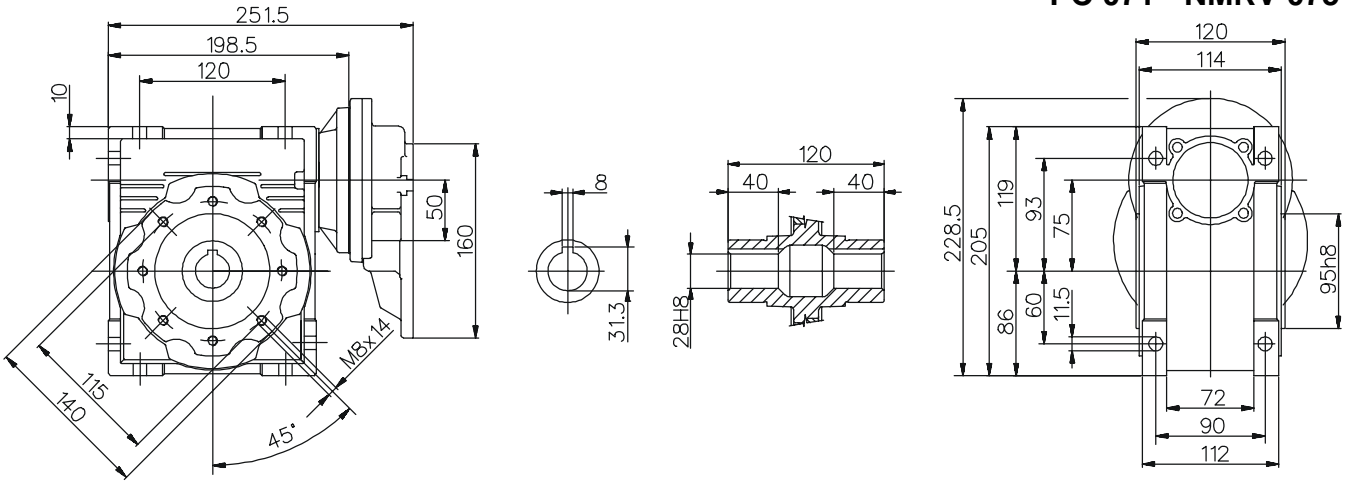
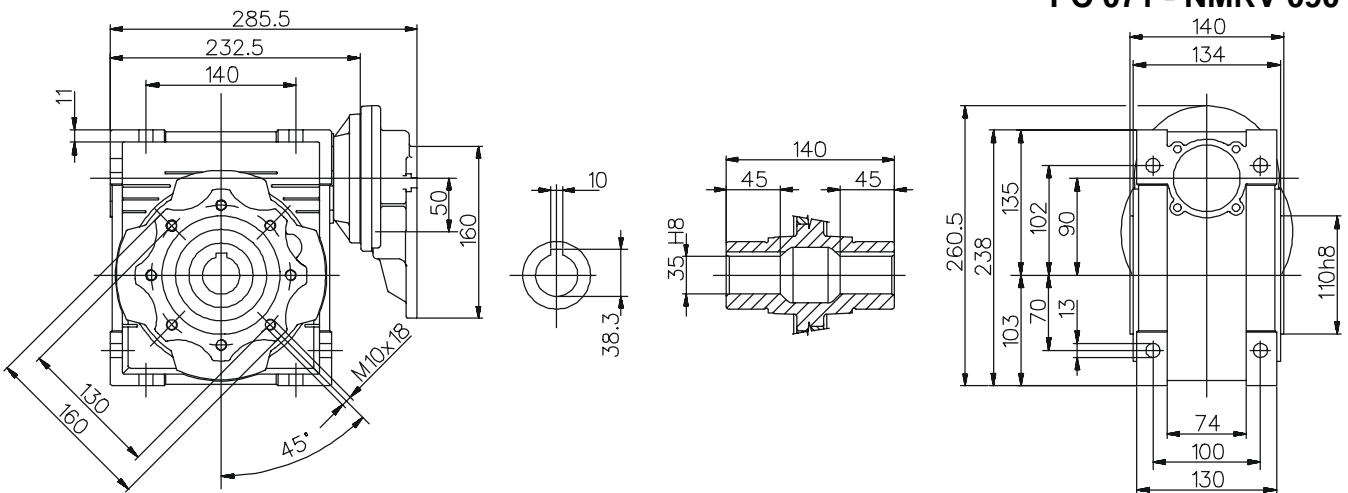
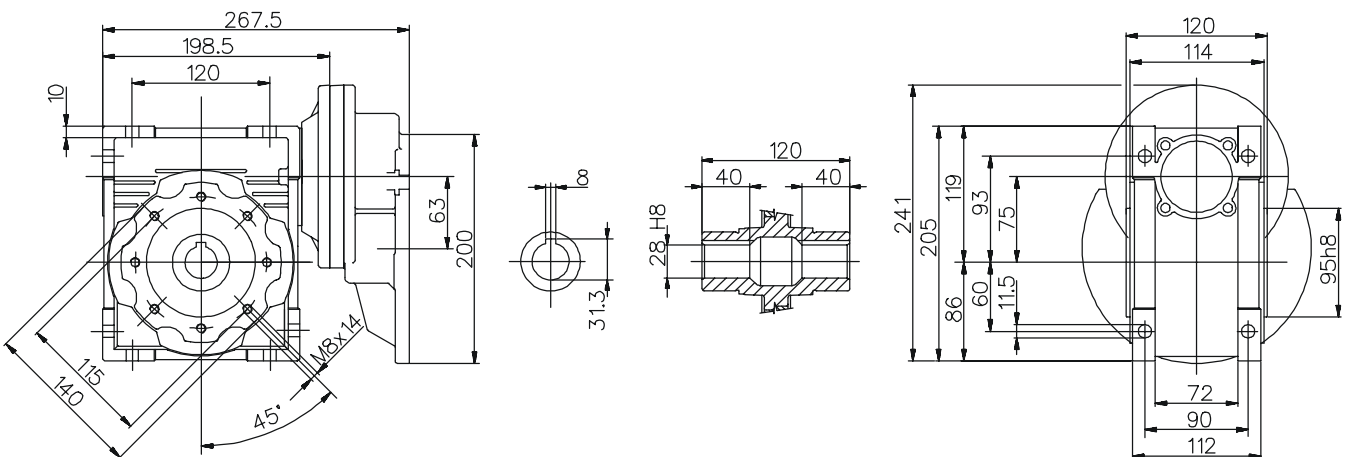
PC 071 - NMRV 050

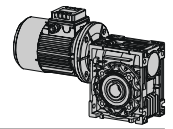


071-063 Dimensioni / Dimensions / Abmessungen / Encombremets / Dimensiones

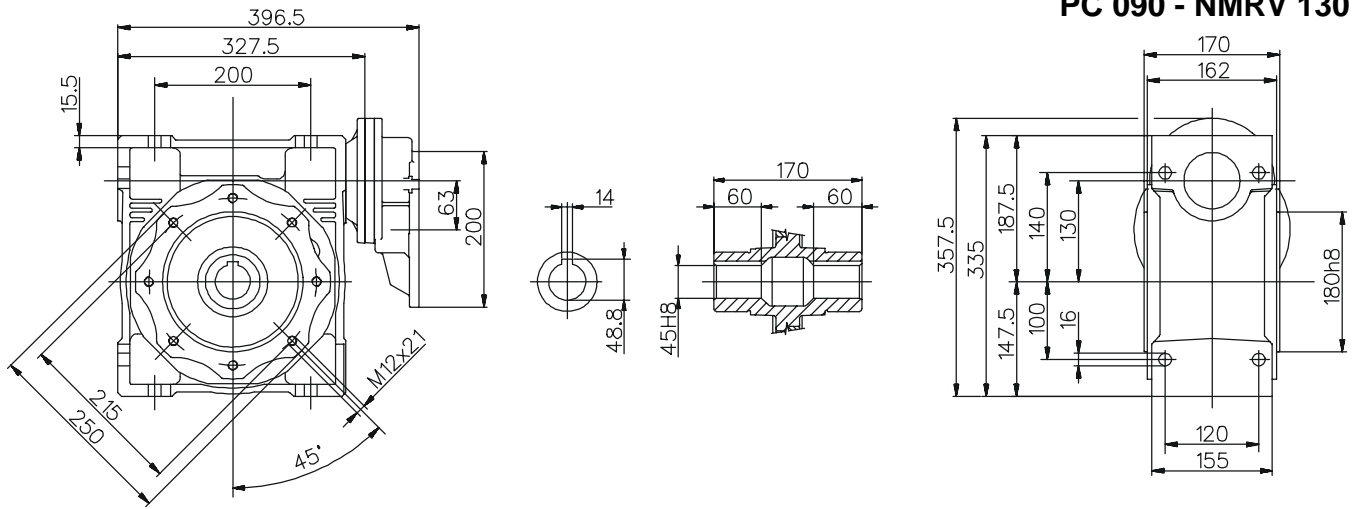
PC 071 - NMRV 063

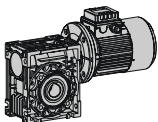



PC 071 - NMRV 075

PC 071 - NMRV 090

PC 080 - NMRV 075




PC 080 - NMRV 130
PC 090 - NMRV 130



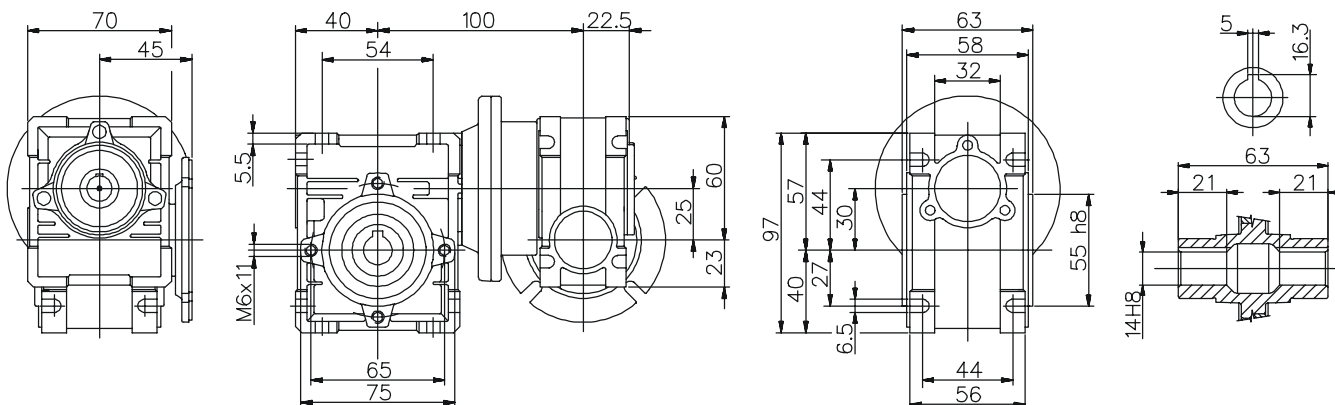


NMRV + NMRV Dimensioni / Dimensions / Abmessungen / Encombremets / Dimensiones

- Per le dimensioni relative alla flangia di uscita, fare riferimento al dimensionale NMRV della grandezza relativa.
 - For the dimensions of the output flanges, please consider the drawing of relevant NMRV size.
 - Die Maße der Abtriebsflansche F-FL sind der Maßzeichnung des NMRV der entsprechenden Größe zu entnehmen.
 - Pour les dimensions relatives aux brides de sortie, nous vous prions de vous référer au dessin NMRV dans la taille désirée.
 - Paras las cotas correspondientes a la brida de salida, hacer referencia a las dimensiones NMRV del tamaño correspondiente.
-
- Per le dimensioni relative agli alberi cavi in versione opzionale, fare riferimento al dimensionale NMRV della grandezza relativa.
 - For the dimensions of the hollow shafts in option, please consider the drawing of relevant NMRV size.
 - Die Maße der auf Anfrage lieferbaren Hohlwellen sind der Maßzeichnung des NMRV der entsprechenden Größe zu entnehmen.
 - Pour les dimensions relatives aux arbres creux en version optionnelle, nous vous prions de vous référer au dessin NMRV dans la taille désirée.
 - Paras las cotas correspondientes a los ejes huecos en la version opcional, hacer referencia a las dimensiones NMRV del tamaño correspondiente.
-
- Per le dimensioni relative alla vite bisporgente, fare riferimento al dimensionale NMRV della grandezza relativa.
 - For the dimensions of the double extension worm shafts, please consider the drawing of relevant NMRV size.
 - Die Maße des doppelten Schneckenwellenendes sind der Maßzeichnung des NMRV der entsprechenden Größe zu entnehmen.
 - Pour les dimensions relatives aux vis sans fin avec double sorties, nous vous prions de vous référer au dessin NMRV dans la taille désirée.
 - Paras las cotas correspondientes al tornillo sinfin prolongado, hacer referencia a las dimensiones NMRV del tamaño correspondiente.

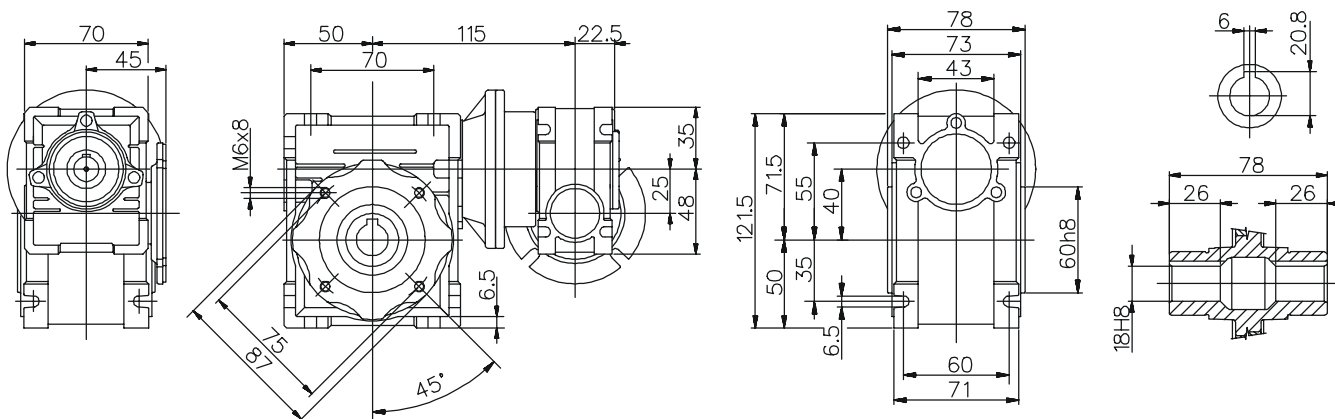
025-030 Dimensioni / Dimensions / Abmessungen / Encombremets / Dimensiones

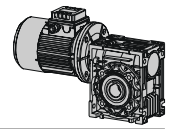
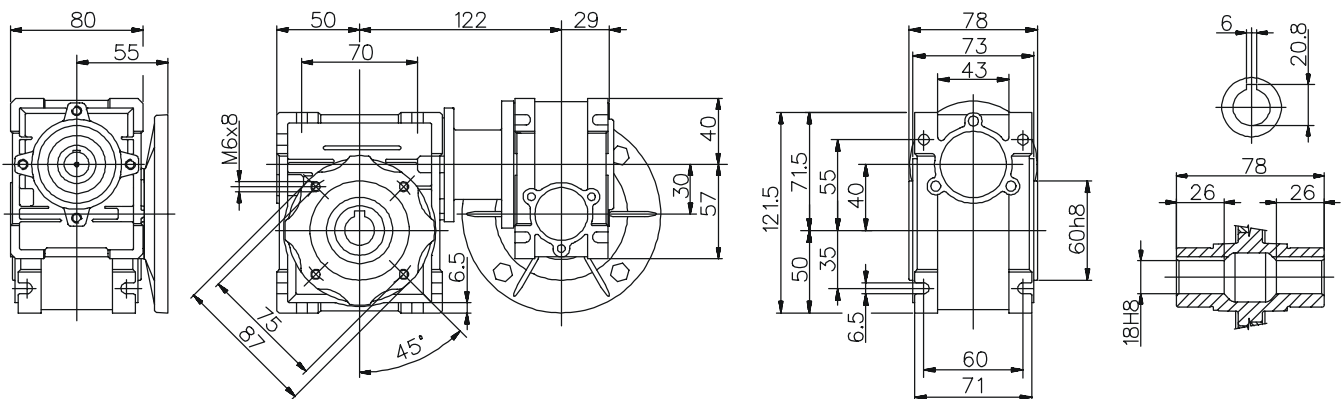
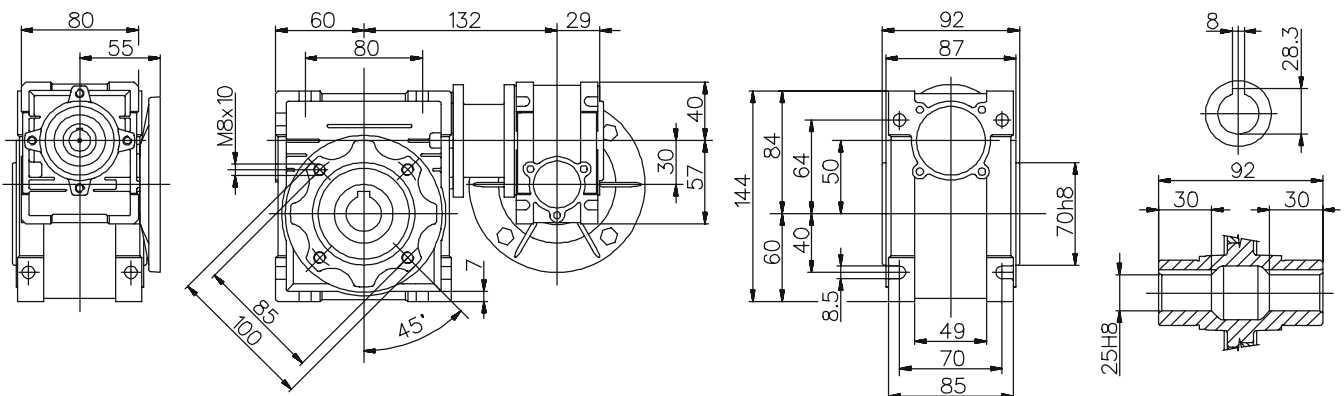
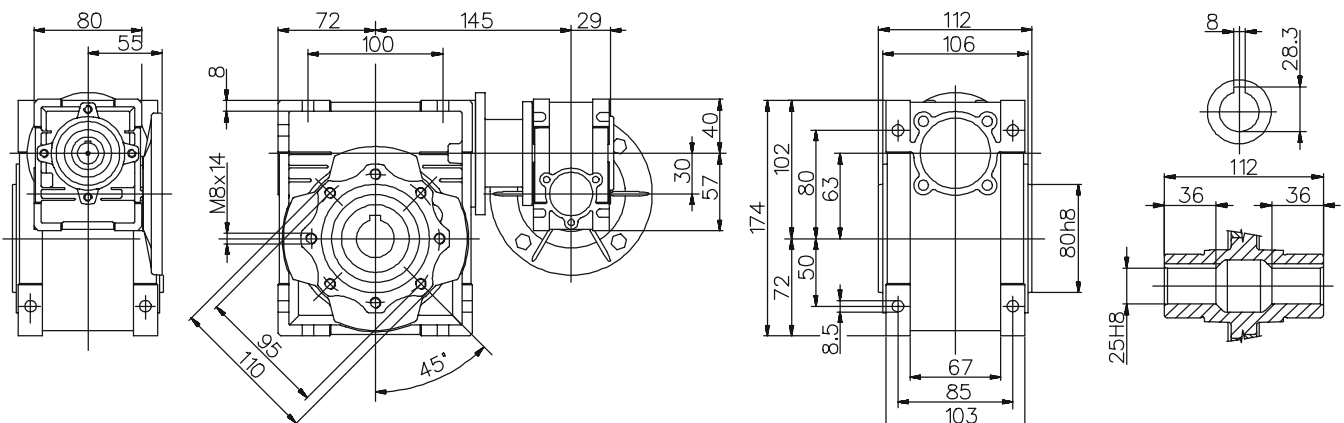
NMRV 025-030

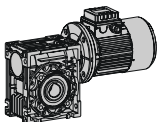


025-040 Dimensioni / Dimensions / Abmessungen / Encombremets / Dimensiones

NMRV 025-040

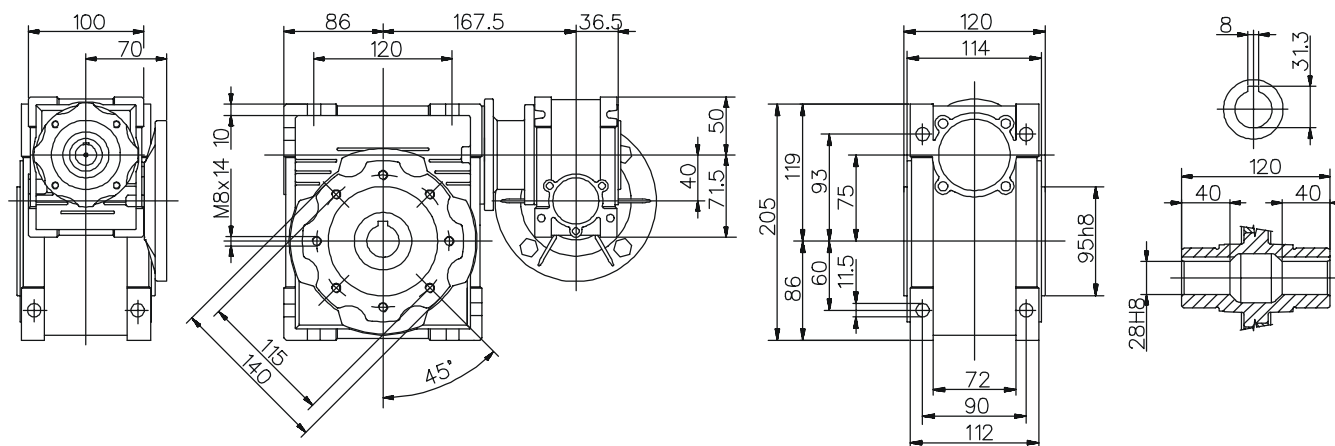



Dimensioni / Dimensions / Abmessungen / Encombremts / Dimensiones
030-040
NMRV 030-040

Dimensioni / Dimensions / Abmessungen / Encombremts / Dimensiones
030-050
NMRV 030-050

Dimensioni / Dimensions / Abmessungen / Encombremts / Dimensiones
030-063
NMRV 030-063




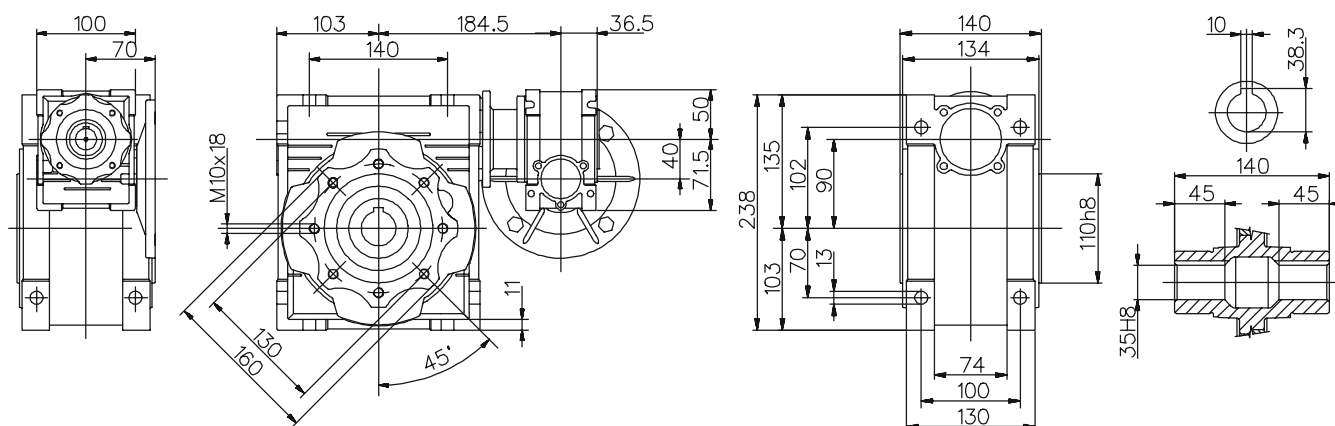
040-075 Dimensioni / Dimensions / Abmessungen / Encombremets / Dimensiones

NMRV 040-075



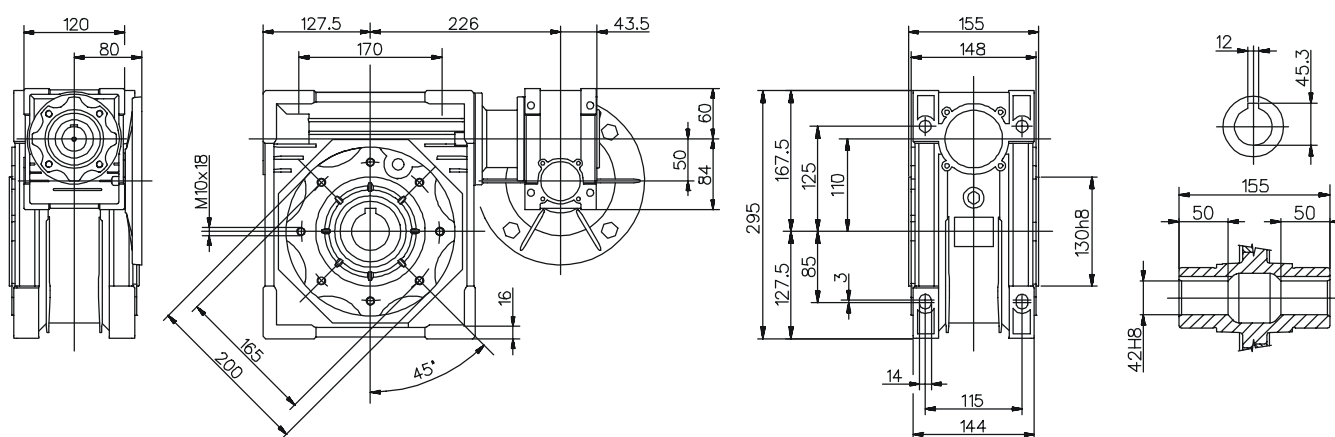
040-090 Dimensioni / Dimensions / Abmessungen / Encombremets / Dimensiones

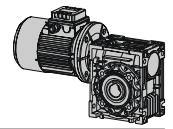
NMRV 040-090



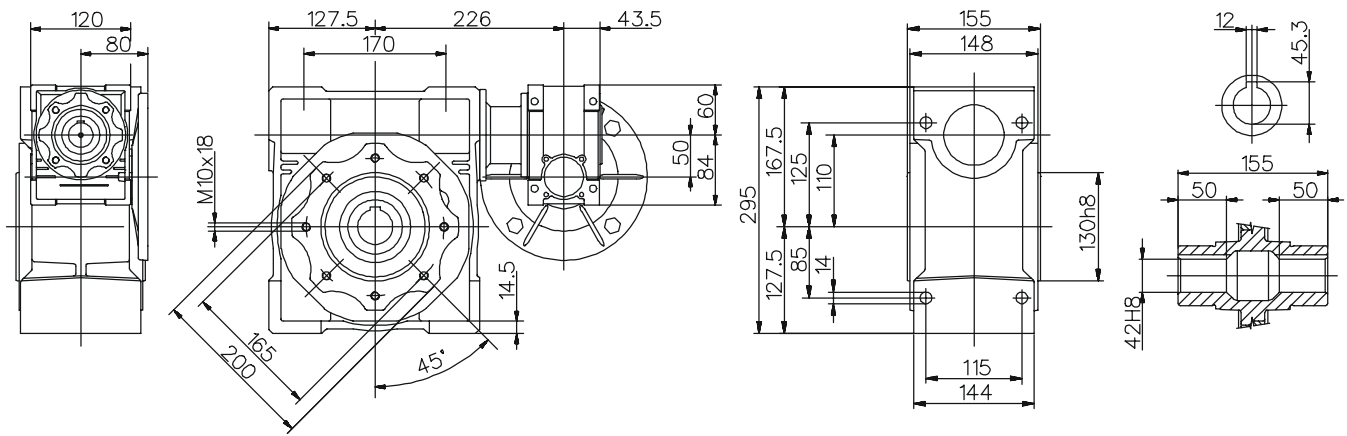
050-105 Dimensioni / Dimensions / Abmessungen / Encombremets / Dimensiones

NMRV 050-105

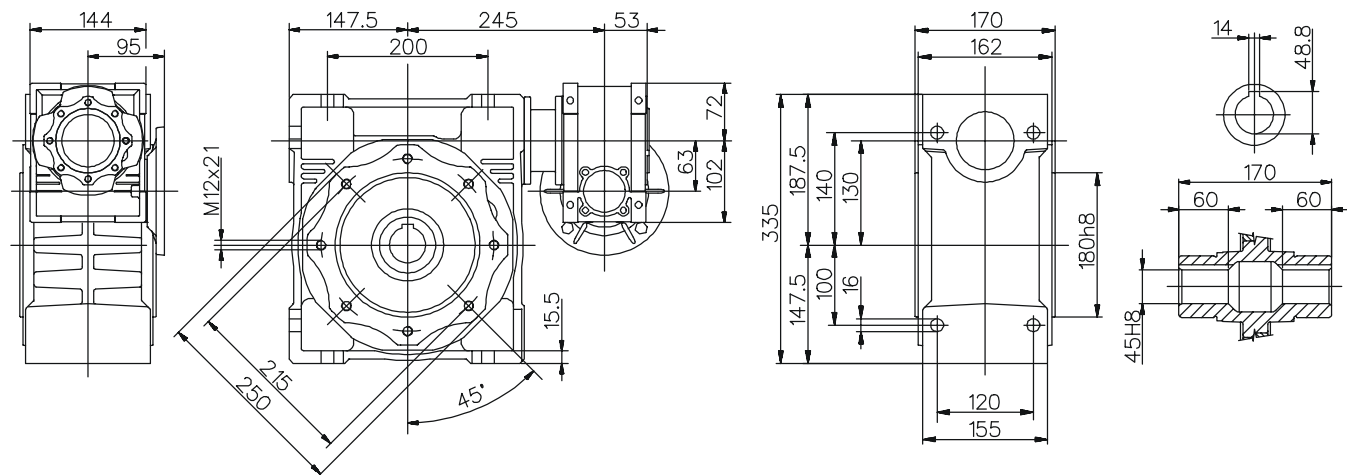




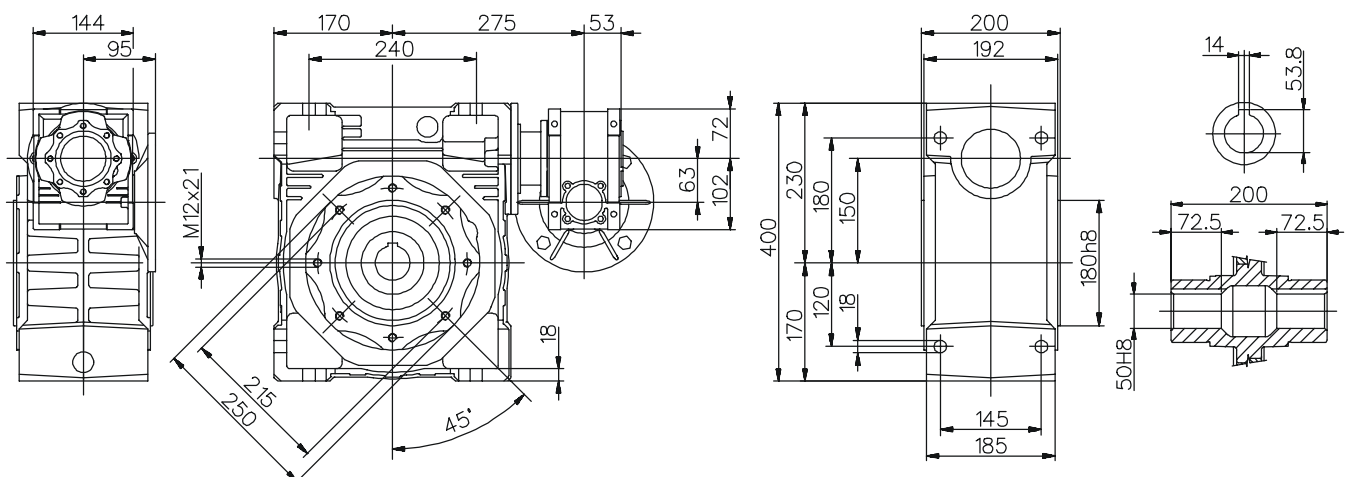
NMRV 050-110

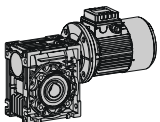


NMRV 063-130

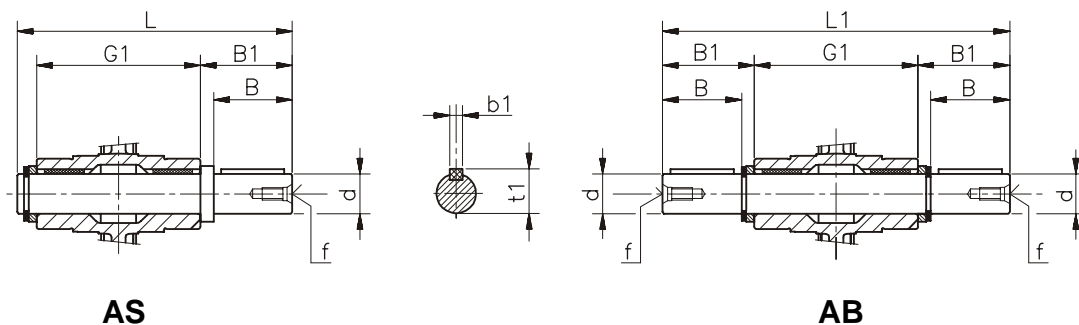


NMRV 063-150





Alberi lenti / Low speed shafts / Abtriebswellen / Arbres pv / Ejes lentos



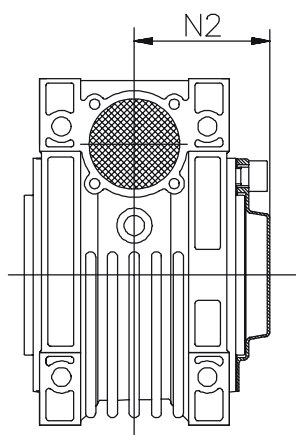
AS

AB

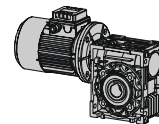
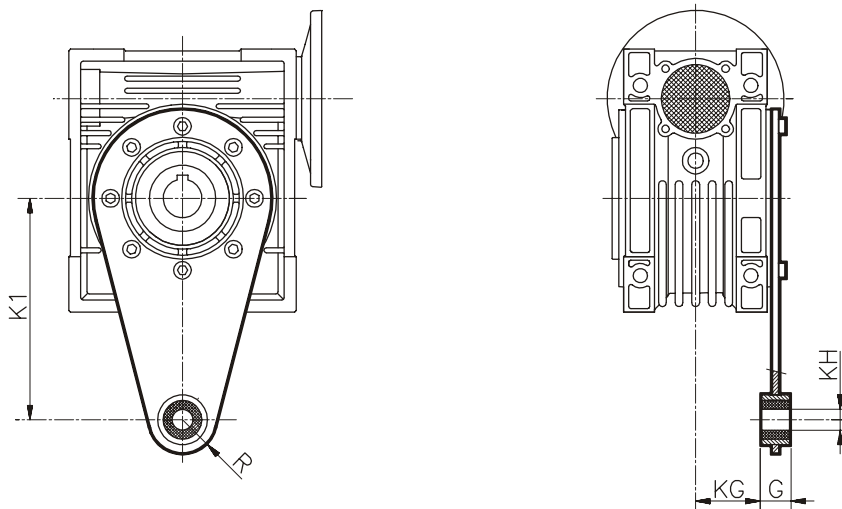
	d	B	B1	G1	L	L1	f	b1	t1
025	11g6 (9)	23 (25)	25,5 (30)	50	81 (85,5)	101	-	4 (3)	12,5 (10,2)
030	14 h6	30	32.5	63	102	128	M6	5	16
040	18 h6	40	43	78	128	164	M6	6	20.5
050	25 h6	50	53.5	92	153	199	M10	8	28
063	25 h6	50	53.5	112	173	219	M10	8	28
075	28 h6	60	63.5	120	192	247	M10	8	31
090	35 h6	80	84.5	140	234	309	M12	10	38
110	42 h6	80	84.5	155	249	324	M16	12	45
130	45 h6	80	85	170	265	340	M16	14	48.5
150	50 h6	82	87	200	297	374	M16	14	53.5

- (..) Solo su richiesta
- (..) Only on request
- (..) Auf Wunsch
- (..) Seulement sur demande
- (..) Sólo bajo pedido

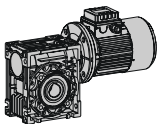
Cappello / Cover / Deckel / Capuchon / Tapa



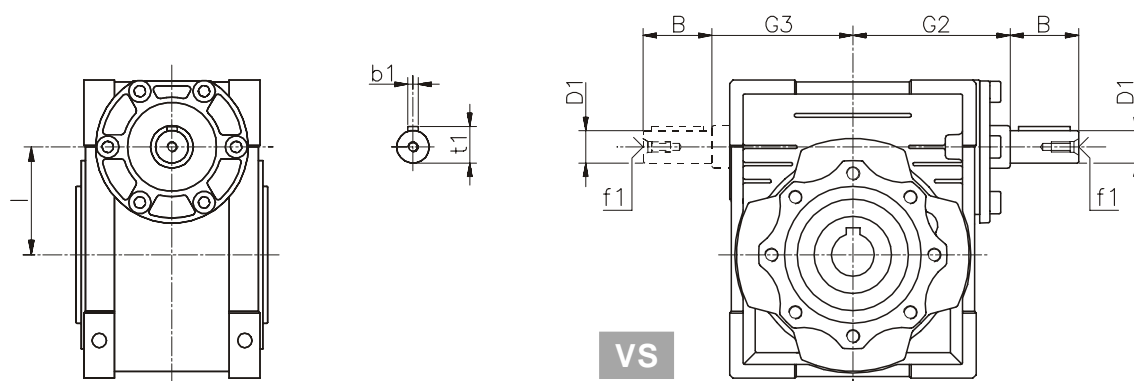
	N2
030	42
040	50
050	57.5
063	68.5
075	73.5
090	85.5
105	94
110	94
130	102
150	117


Braccio di reazione / Torque arm / Drehmomentstütze / Bras de réaction / Brazo de reacción


	K1	G	KG	KH	R
025	70	14	17,5	8	15
030	85	14	24	8	15
040	100	14	31,5	10	18
050	100	14	38,5	10	18
063	150	14	49	10	18
075	200	25	47,5	20	30
090	200	25	57,5	20	30
105	250	30	62	25	35
110	250	30	62	25	35
130	250	30	69	25	35
150	250	30	84	25	35

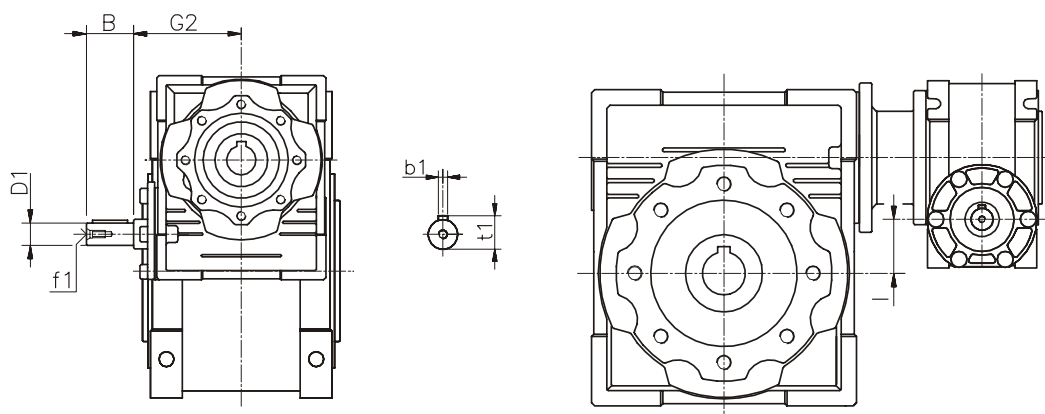


Dimensioni / Dimensions / Abmessungen / Encombremets / Dimensiones **NRV**



NRV	030	040	050	063	075	090	105	110	130	150
B	20	23	30	40	50	50	60	60	80	80
D1	9 j6	11 j6	14 j6	19 j6	24 j6	24 j6	28 j6	28 j6	30 j6	35 j6
G2	51	60	74	90	105	125	142	142	162	195
G3	45	53	64	75	90	108	135	135	155	175
l	30	40	50	63	75	90	110	110	130	150
b1	3	4	5	6	8	8	8	8	8	10
f1	-	-	M6	M6	M8	M8	M10	M10	M10	M12
t1	10,2	12,5	16	21,5	27	27	31	31	33	38

Dimensioni / Dimensions / Abmessungen / Encombremets / Dimensiones **NRV-NMRV**



NRV-NMRV	030-040	030-050	030-063	040-075	040-090	050-105	050-110	063-130	063-150
B	20	20	20	23	23	30	30	40	40
D1	9 j6	9 j6	9 j6	11 j6	11 j6	14 j6	14 j6	19 j6	19 j6
G2	51	51	51	60	60	74	74	90	90
l	10	20	33	35	50	60	60	67	87
b1	3	3	3	4	4	5	5	6	6
f1	-	-	-	-	-	M6	M6	M6	M6
t1	10,2	10,2	10,2	12,5	12,5	16	16	21,5	21,5

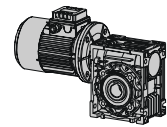
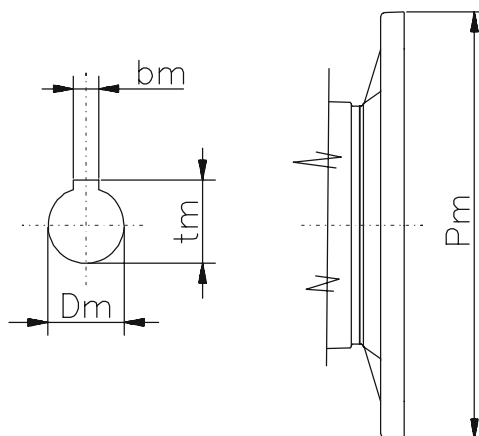
Per le dimensioni non contemplate fare riferimento al dimensionale NMRV della grandezza relativa.

For the missing dimensions, please consider the drawing of relevant NMRV size.

Die nicht angegebenen Maße sind der Maßzeichnung des NMRV der entsprechenden Größe zu entnehmen.

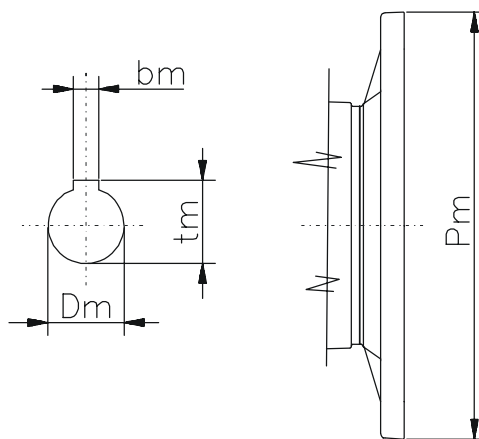
Pour les dimensions non spécifiées, nous vous prions de vous référer au dessin NMRV dans la taille désirée.

Para las cotas no contempladas hacer referencia a las dimensiones NMRV de los tamaños correspondientes.


PAM B5 - Dimensioni / Dimensions / Abmessungen / Encombremets / Dimensiones


B5	IEC										
	056	063	071	080	090	100	112	132	160	180	200
Pm	120	140	160	200	200	250	250	300	350	350	400
Dm	9	11	14	19	24	28	28	38	42	48	55
bm	3	4	5	6	8	8	8	10	12	14	16
tm	10,4	12,8	16,3	21,8	27,3	31,3	31,3	41,3	45,3	51,8	59,3

NMRV (110 ÷ 130) tm= 40,3 (IEC 132)

PAM B14 - Dimensioni / Dimensions / Abmessungen / Encombremets / Dimensiones


B14	IEC							
	056	063	071	080	090	100	112	132
Pm	80	90	105	120	140	160	160	200
Dm	9	11	14	19	24	28	28	38
bm	3	4	5	6	8	8	8	10
tm	10,4	12,8	16,3	21,8	27,3	31,3	31,3	41,3