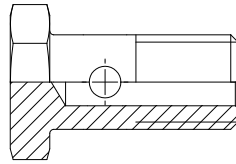


02.0

Pag. 1

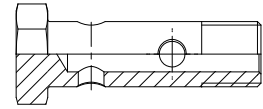
ESFÉRICA PARA SOLDAR
WELDING BANJOS
UNION ORIENTABLE (BANJO) À SOUDER
ANSCHWEIß-ACHWENKVERSCHAUBUNGEN
RACCORDA ORIENTABILE A SALDARE



02.

Pag. 1

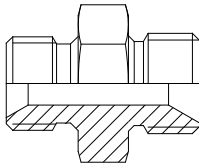
TORNILLO SIMPLE MÉTRICO
SIMPLE SCREW



097.

Pag. 1

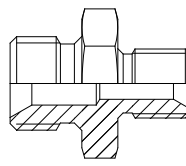
TORNILLO DOBLE MÉTRICO
DOUBLE SCREW



31.17

Pag. 2

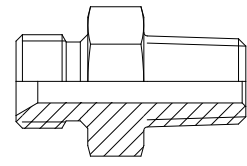
EMPALME MACHO MÉTRICO CONO 60°-GAS
STRAIGHT ADAPTER MALE (METRIC-B.S.P. PARALLEL 60°)



31.19

Pag. 2

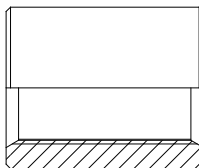
EMPALME MACHO MÉTRICO CONO 60°
REDUCTION STRAIGHT ADAPTER MALE METRIC 60°



31.24

Pag. 3

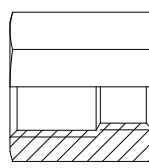
EMPALME MACHO MÉTRICO CONO 60°-BSPT (GAS CONICO)
STRAIGHT ADAPTER MALE (METRIC 60°-B.S.P. Tapered)



31.41

Pag. 3

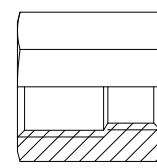
MANGUITO HEMBRA
FEMALE WELDING BOSSES



31.12

Pag. 4

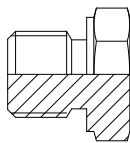
SUPLEMENTO REDUCTOR MÉTRICO
REDUCTION ADAPTER FEMALE (METRIC)



31.14

Pag. 4

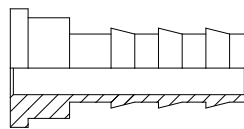
SUPLEMENTO REDUCTOR MÉTRICO-GAS
REDUCTION ADAPTER FEMALE (METRIC-B.S.P. PARALLEL)



TN 186

Pag. 4

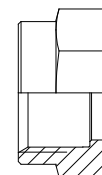
TAPÓN
PLUG FOR TUBE
OBTURATEUR POUR TUBE
ROHRVESLUSS
TAPPO PER TUBO



09.

Pag. 5

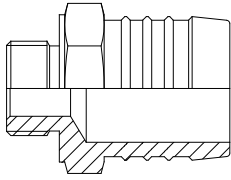
ESPIGAS PLANAS
FLAT FACE TAILS



92.

Pag. 5

TUERCA
NUT



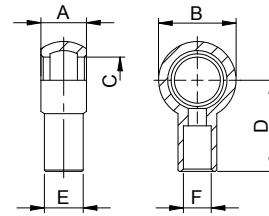
60.11

Pag. 5

RACOR ADMISIÓN BOMBA. MF GAS CIL., ASIENTO PLANO
PUMP ADAPTOR BSPP MALE FLAT FACE

02.0

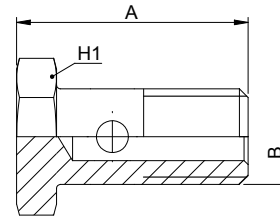
ESFÉRICA PARA SOLDAR
WELDING BANJOS
UNION ORIENTABLE (BANJO) À SOUDER
ANSCHWEIß-ACHWENKVERSCHAUBUNGEN
RACCORDA ORIENTABILE A SALDARE



Ref.	A	B	C	D	E	F
2.46						
2.47	10	17	10,1	20	8,5	6,1
2.48	12	20	12,1	22	10,5	8,1
2.49	15	24	14,1	24	12,5	10,1
2.50	17	28	16,1	26	14,5	12,1
2.51	19	32	18,2	30	18	15,1
2.52	22	35	20,2	32	19,5	16,1
2.53	22	36	33,2	33	21	18,1
2.54	30	46	26,2	36	25	22,1

02.

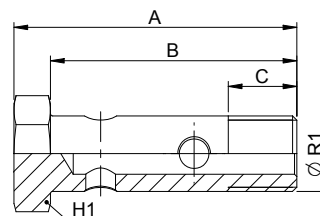
TORNILLO SIMPLE MÉTRICO
SIMPLE SCREW



Ref.	A	B	H1
2.61	17	M6x1,0	10
2.63		M8x1,25	
2.64	21	M8x1	12
2.65	24	M10x1	14
2.62	25	M10x1,25	14
2.66	29	M12x1,5	17
2.67	31	M14x1,5	19
2.68	34	M16x1,5	22
2.69	38	M18x1,5	24
2.70	43	M20x1,5	25
2.71	47	M22x1,5	27
2.72		M24x1,5	
2.73		M26x1,5	

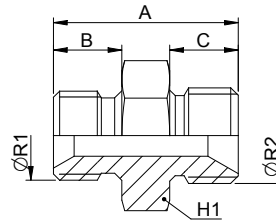
097.

TORNILLO DOBLE MÉTRICO
DOUBLE SCREW



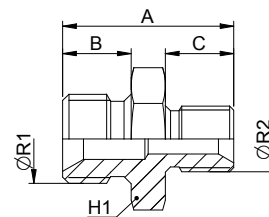
Ref.	A	B	C	H1	ØR1
9.77					M8x1
9.78					M10x1
9.79					M12x1,5
9.80	47	41	16	19	M14x1,5
9.81	62	53	12	22	M16x1,5
9.82	62	53	13	22	M18x1,5

EMPALME MACHO MÉTRICO CONO 60°-GAS
STRAIGHT ADAPTER MALE (METRIC-B.S.P. PARALLEL 60°)



Ref.	A	B	C	H1	ØR1	ØR2
31.17.10.04	27	10	10	18	M10x1,5	1/4
31.17.10.06	30	10	12	22	M10x1,5	3/8
31.17.11.04	27	10	12	18	M10x1,0	1/4
31.17.12.04	27	10	10	18	M12x1,5	1/4
31.17.12.06	30	10	12	22	M12x1,5	3/8
31.17.12.08	32	10	14	27	M12x1,5	1/2
31.17.13.04					M12x1	1/4
31.17.14.04	27	10	10	19	M14x1,5	1/4
31.17.14.06	30	10	12	22	M14x1,5	3/8
31.17.14.08	32	10	14	27	M14x1,5	1/2
31.17.16.04	29	11	10	22	M16x1,5	1/4
31.17.16.06	31	11	12	22	M16x1,5	3/8
31.17.16.08	31	11	14	27	M16x1,5	1/2
31.17.16.12	37	11	16	32	M16x1,5	3/4
31.17.18.04	30	12	10	22	M18x1,5	1/4
31.17.18.06	32	12	12	22	M18x1,5	3/8
31.17.18.08	35	12	14	27	M18x1,5	1/2
31.17.18.12	38	12	16	32	M18x1,5	3/4
31.17.20.04	33	15	10	27	M20x1,5	1/4
31.17.20.06	35	15	12	27	M20x1,5	3/8
31.17.20.08	37	15	14	27	M20x1,5	1/2
31.17.20.12	41	15	16	32	M20x1,5	3/4
31.17.22.06	35	14	12	27	M22x1,5	3/8
31.17.22.08	37	14	14	27	M22x1,5	1/2
31.17.22.12	40	14	16	32	M22x1,5	3/4
31.17.24.08	40	16	14	30	M24x1,5	1/2
31.17.26.08	38	14	14	32	M26x1,5	1/2
31.17.26.12	40	14	16	32	M26x1,5	3/4
31.17.30.12	42	14	16	36	M30x1,5	3/4
31.17.33.12					M33x2	3/4
31.17.33.16					M33x2	1

EMPALME MACHO MÉTRICO CONO 60°
REDUCTION STRAIGHT ADAPTER MALE METRIC 60°



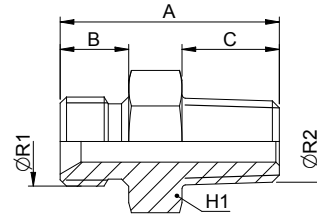
Ref.	A	B	C	H1	ØR1	ØR2
31.19.12.12	27	10	10	19	M12x1,5	M12x1,5
31.19.14.12	27	10	10	19	M14x1,5	M12x1,5
31.19.14.14	27	10	10	19	M14x1,5	M14x1,5
31.19.16.14	29	11	10	22	M16x1,5	M14x1,5
31.19.16.16	30	11	11	22	M16x1,5	M16x1,5
31.19.18.14	30	12	10	22	M18x1,5	M14x1,5
31.19.18.16	31	12	11	22	M18x1,5	M16x1,5
31.19.18.18	32	12	12	22	M18x1,5	M18x1,5
31.19.20.16	34	15	11	27	M20x1,5	M16x1,5

Continua >

Ref.	A	B	C	H1	ØR1	ØR2
31.19.20.18	35	15	12	27	M20x1,5	M18x1,5
31.19.20.20	38	15	15	27	M20x1,5	M20x1,5
31.19.22.16	34	14	11	27	M22x1,5	M16x1,5
31.19.22.18	35	14	12	27	M22x1,5	M18x1,5
31.19.22.20	38	14	15	27	M22x1,5	M20x1,5
31.19.22.22	37	14	14	27	M22x1,5	M22x1,5
31.19.24.22	40	16	14	30	M24x1,5	M22x1,5
31.19.24.24	42	16	16	30	M24x1,5	M24x1,5
31.19.26.22	38	14	14	32	M26x1,5	M22x1,5
31.19.26.26	38	14	14	32	M26x1,5	M26x1,5
31.19.30.30	40	14	14	36	M30x1,5	M30x1,5

31.24

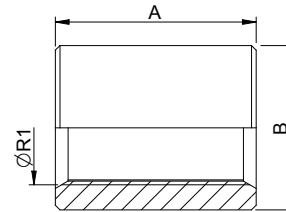
EMPALME MACHO MÉTRICO CONO 60°-BSPT (GAS CONICO) STRAIGHT ADAPTER MALE (METRIC 60°-B.S.P. Tapered)



Ref.	A	B	C	H1	ØR1	ØR2
31.24.14.04	32	10	14.2	19	M14x1,5	1/4
31.24.18.06	35.2	14	14.2	22	M18x1,5	3/8
31.24.22.08	41.8	14	19	27	M22x1,5	1/2
31.24.30.12	44	14	19	32	M30x1,5	3/4
31.24.38.16	51	15	23.9	40	M38x1,5	1
31.24.45.20	51.6	15	24.6	50	M45x1,5	1.1/4

31.41

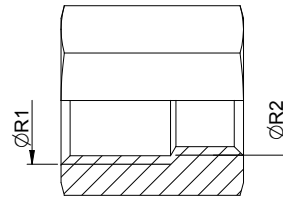
MANGUITO HEMBRA FEMALE WELDING BOSSES



Ref.	A	B	ØR1
31.41.10.01	20	16	M10x1
31.41.10.10	20	16	M10x1,5
31.41.12.12	22	18	M12x1,5
31.41.14.14	24	20	M14x1,5
31.41.16.16	26	22	M16x1,5
31.41.18.18	26	25	M18x1,5
31.41.20.20	30	28	M20x1,5
31.41.22.22	32	30	M22x1,5
31.41.24.24	32	32	M24x1,5
31.41.26.26	35	35	M26x1,5

31.12

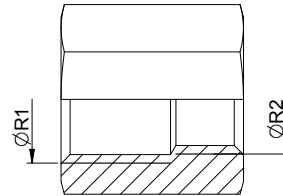
SUPLEMENTO REDUCTOR MÉTRICO
REDUCTION ADAPTER FEMALE (METRIC)



Ref.	ØR1	ØR2
31.12.08.06	M8x125	M6x100
31.12.10.08	M10x150	M8x125
31.12.12.10	M12x150	M10x150
31.12.14.12	M14x150	M12x150
31.12.16.14	M16x150	M14x150
31.12.18.16	M18x150	M16x150
31.12.20.18	M20x150	M18x150
31.12.22.20	M22x150	M20x150
31.12.24.22	M24x150	M22x150
31.12.26.24	M26x150	M24x150
31.12.30.26	M30x150	M26x150

31.14

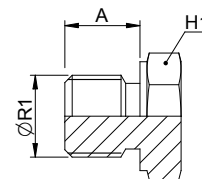
SUPLEMENTO REDUCTOR MÉTRICO-GAS
REDUCTION ADAPTER FEMALE (METRIC-B.S.P. PARALLEL)



Ref.	ØR1	ØR2
31.14.16.06	M16x150	3/8
31.14.18.08	M18x150	1/2
31.14.22.08	M22x150	1/2

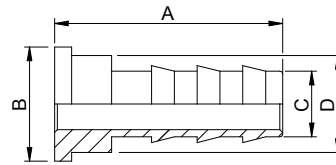
TN 186

TAPÓN
PLUG FOR TUBE
OBTURATEUR POUR TUBE
ROHRVESCLUS
TAPPO PER TUBO



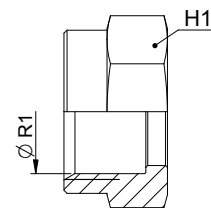
Ref.	A	ØR1	H1
TN 186 M8x100	8,5	M8x100	12
TN 186 M10x100	9	M10x100	14
TN 186 M12x100	11	M12x100	16
TN 186 M12x150	11	M12x150	16
TN 186 M14x150	11	M14x150	19
TN 186 M16x150	12	M16x150	22
TN 186 M18x150	12	M18x150	24
TN 186 M20x150	14	M20x150	27
TN 186 M22x150	15	M22x150	27
TN 186 M24x150	16	M24x150	30
TN 186 M26x150	17	M26x150	32
TN 186 M30x150	16	M30x150	36
TN 186 M33x200	18	M33x200	41
TN 186 M36x200		M36x200	
TN 186 M42x200		M42x200	

09.

ESPIGAS PLANAS
FLAT FACE TAILS


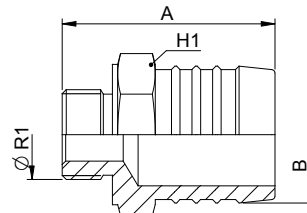
Ref.	A	B	C	D
9.30	40	20	13,5	17
9.31	41,5	24	16,5	20,7
9.32	41,5	28	19,5	24,1
9.33	47,5	20	13,5	17
9.34	52	24	16,5	20,7
9.35	55	28	19,5	24,1

92.

TUERCA
NUT


Ref.	ØR1	H1
9.22	M22x150	27
9.24	M26x150	32
9.26	M30x150	36

60.11

RACOR ADMISIÓN BOMBA. MF GAS CIL., ASIENTO PLANO
PUMP ADAPTOR BSPP MALE FLAT FACE


Ref.	A	B	H1	ØR1
60.11.12.40	62,2	40	41	3/4
60.11.16.40	66,2	40	41	1
60.11.16.50	83,5	50	50	1
60.11.20.40	66,2	40	50	1.1/4
60.11.20.50	83,5	50	50	1.1/4
60.11.24.50	83,5	50	55	1.1/2
60.11.32.50	84,5	50	70	2

FABRICACIÓN:

ACERO al CARBONO

Los racores indicados pueden servirse también en acero inoxidable
AISI 316 (DIN 1.4404).
No dude en consultar cualquier necesidad.

ESECUZIONE:

ACCIAIO al CARBONIO

I raccordi sono prodotti anche in acciaio AISI 316 (DIN 1.4404).
No dubitarsi di consultare qualsiasi necessità.

FABRICATION:

ACCIER au CARBONE

Les raccords sont fabriqués même en acier Inox AISI 316 (DIN 1.4404).
Ne doutez pas de consulter votre nécessité.

EXECUTION:

CARBON STEEL

Fittings are also made in AISI 316 stainless steel (DIN 1.4404).
Don't doubt to consult us your necessity.

MATERIAL:

STAHL, OBERFLÄCHENBEHANDELT

Die Verschraubungen werden auch aus Edelstahl AISI 316 (DIN 1.4404)
hergestellt.
Zögern Sie nicht Ihre Sonderwünsche anzufragen.

Los productos y medidas contenidos en este catálogo técnico pueden ser objeto de modificación sin previo aviso. **FONTAN RACORERIA** se reserva el derecho de aplicar variaciones técnicas, dimensionales y estéticas en sus propios productos.

Le quote ed i pesi riportati nelle tabelle di questo catalogo sono soltanto indicative. La **FONTAN RACORERIA** si riserva il diritto di apportare variazione tecniche, dimensionali ed estetiche ai propri prodotti.

Les cotes et les poids reportés dans les tableaux de ce catalogue sont purement indicatifs. La Société **FONTAN RACORERIA** se réserve le droit d'apporter des variations techniques, dimensionnelles et esthétiques à ses propres produits.

The dimensions and weights given in the tables in this catalogue are pure indicative. **FONTAN RACORERIA** reserves the right to make technical, dimensional or aesthetic changes to its products.

Die in den Tabellen dieses Kataloges aufgeführten Maße und Gewichte sind nur Richtwerte. **FONTAN RACORERIA** sind technische sowie Maß- und Gestaltungsänderungen der Erzeugnisse vorbehalten.

