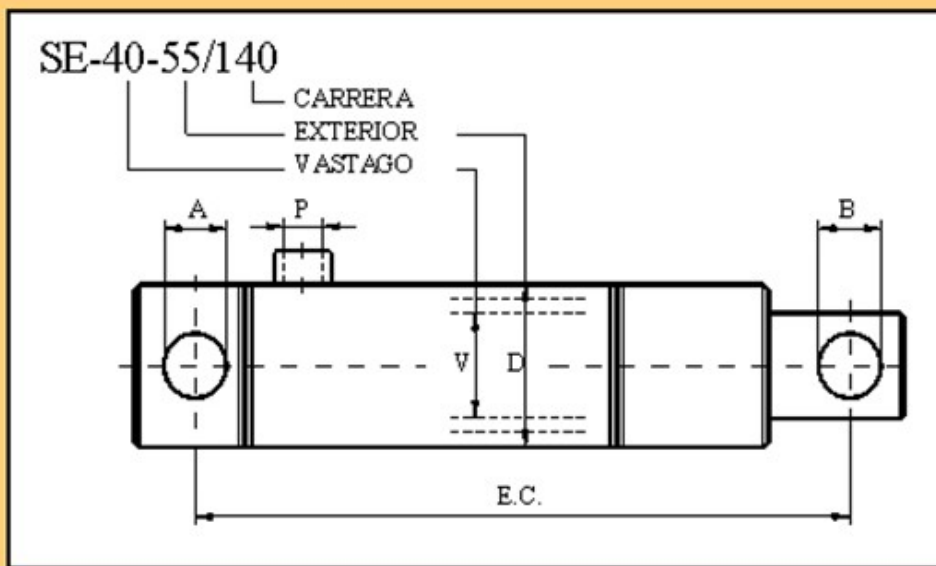




## CILINDROS HIDRAULICOS

### Cilindro Simple efecto

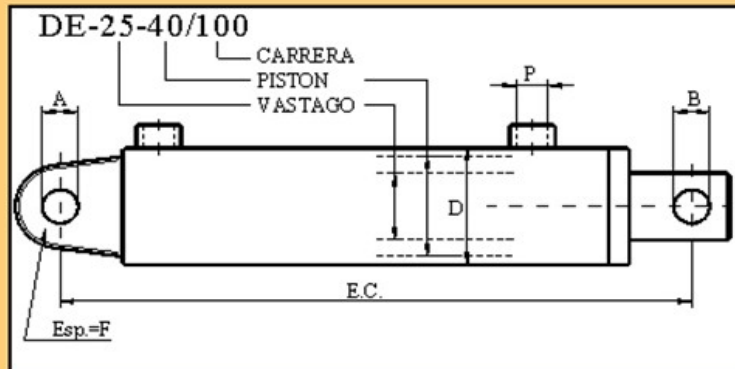


$P_{max}=180 \text{ Kg/cm}^2$

CILINDRO	V	D	CARRERA	E.C.	A	B	P
SE-25-50/95 MUELLE	25	50	95	234	12,5	12,5	1/2"G
SE-30-45/100	30	45	100	200	15	15	1/2"G
SE-35-50/330	35	50	330	480	22	22	1/2"G
SE-40-55/100	40	55	100	200	16	16	1/2"G
SE-40-55/140	40	55	140	253	20	14,5	1/2"G
SE-40-55/342	40	55	342	450	20	16	1/2"G
SE-50-65/300	50	65	300	454	28	28	1/2"G
SE-50-65/500	50	65	500	650	28	28	1/2"G
SE-50-65/600	50	65	600	750	28	28	1/2"G
SE-65-85/300 *	65	85	300	481	25	30	1/2"G
SE-65-85/350 *	65	85	350	531	25	30	1/2"G
SE-85-112/350 *	85	112	350	536	31	35	1/2"G
SE-85-112/500 *	85	112	500	686	31	35	1/2"G



## Cilindro Doble Efecto

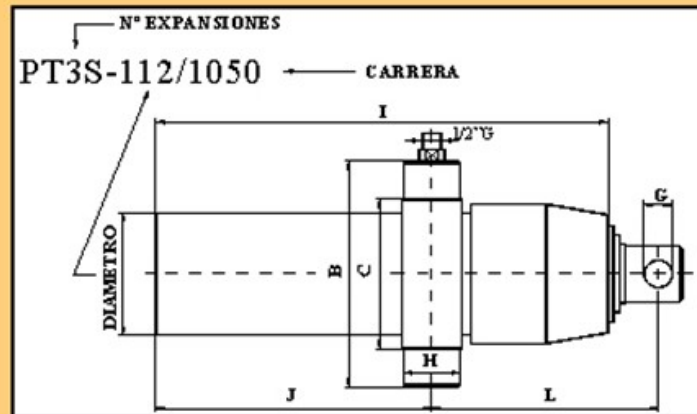


Pmax=200 Kg/cm<sup>2</sup>

CILINDRO	E.C.	A	B	D	F	P
DE-25-40/100	267	15	15	50	20	3/8"G
DE-25-40/150	317	15	15	50	20	3/8"G
DE-25-40/200	367	15	15	50	20	3/8"G
DE-25-40/250	417	15	15	50	20	3/8"G
DE-25-40/300	467	15	15	50	20	3/8"G
DE-25-40/400	567	15	15	50	20	3/8"G
DE-25-40/500	667	15	15	50	20	3/8"G
DE-30-50/150	351	18	18	60	25	3/8"G
DE-30-50/180	386	16	16	60	25	1/2"G
DE-30-50/250	451	18	18	60	25	3/8"G
DE-30-50/300	501	18	18	60	25	3/8"G
DE-30-50/350	551	18	18	60	25	3/8"G
DE-30-50/400	601	18	18	60	25	3/8"G
DE-30-50/450	651	18	18	60	25	3/8"G
DE-30-50/800	1001	18	18	60	25	3/8"G
DE-30-50/1000	1201	18	18	60	25	3/8"G
DE-40-60/200	411	22	22	70	30	3/8"G
DE-40-60/300	511	22	22	70	30	3/8"G
DE-40-60/400	611	22	22	70	30	3/8"G
DE-40-60/500	711	22	22	70	30	3/8"G
DE-40-60/600	811	22	22	70	30	3/8"G
DE-40-60/1000	1211	22	22	70	30	3/8"G
DE-40-70/350	577	22	22	85	30	1/2"G
DE-40-70/500	727	22	22	85	30	1/2"G
DE-45-70/350	582	25	25	85	30	1/2"G
DE-45-70/400	615	23	23	85	30	3/8"G
DE-45-70/450	682	25	25	85	30	1/2"G
DE-45-70/500	715	23	23	85	30	3/8"G
DE-45-70/550	782	25	25	85	30	1/2"G
DE-50-80/300	547	28	28	95	40	1/2"G
DE-50-80/600	842	28	28	95	40	1/2"G
DE-50-85/400	650	30	30	100	35	1/2"G



## Cilindro Telescópico



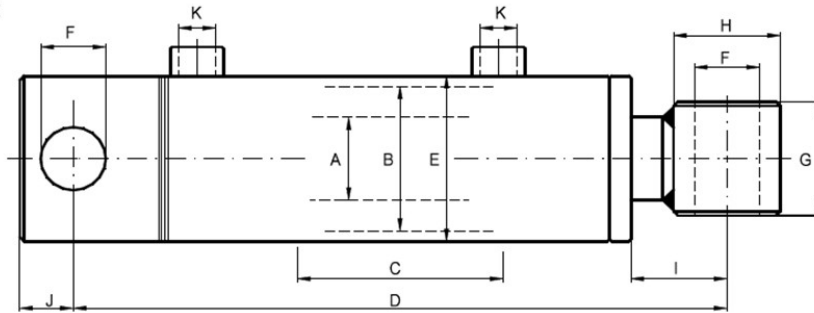
$P_{max}=180 \text{ Kg/cm}^2$

CILINDRO	B	C	G	H	I	J	L	EXP.1ª	EXP.2ª	EXP.3ª	EXP.4ª	POTENCIA Kg
PT2S-85/600	185	105	25	45	415	247	215	65	47	-	-	3500
PT2S-85/700	185	105	25	45	465	297	215	65	47	-	-	3500
PT2S-100/700	207	122	25	50	469	288	228	76	60,5	-	-	5000
PT2S-100/900	207	122	25	50	567	386	228	76	60,5	-	-	5000
PT2S-112/600	231	146	30	50	419	238	228	85	65	-	-	6000
PT2S-112/700	231	146	30	50	469	288	228	85	65	-	-	6000
PT2S-112/1000	231	146	30	50	619	438	228	85	65	-	-	6000
PT2S-140/700	250	165	35	60	469	283	233	106	85	-	-	9500
PT2S-140/1000	250	165	35	60	619	433	233	106	85	-	-	9500
PT3S-100/1050	207	122	25	50	469	288	224	76	60,5	42	-	4000
PT3S-112/900	231	146	25	50	419	238	234	85	65	47	-	5000
PT3S-112/1050	231	146	25	50	469	288	234	85	65	47	-	5000
PT3S-112/1500	231	146	25	50	619	438	234	85	65	47	-	5000
PT3S-140/900	250	165	30	60	419	233	239	106	85	65	-	7500
PT3S-140/1050	250	165	30	60	469	283	239	106	85	65	-	7500
PT3S-140/1200	250	165	30	60	519	333	239	106	85	65	-	7500
PT3S-140/1300	250	165	30	60	552	366	239	106	85	65	-	7500
PT3S-140/1500	250	165	30	60	619	433	239	106	85	65	-	7500
PT3S-145/1050	250	165	35	60	469	283	239	114	95	75	-	8500
PT3S-145/1300	250	165	35	60	552	366	239	114	95	75	-	8500
PT3S-160/1050	284	184	35	65	475	286	241	130	106	85	-	13000
PT3S-160/1300	284	184	35	65	557	369	241	130	106	85	-	13000
PT3S-160/1500	284	184	35	65	625	436	241	130	106	85	-	13000
PT3S-180/1050	320	210	40	65	475	286	241	145	120	97	-	15000
PT3S-180/1200	320	210	40	65	525	336	241	145	120	97	-	15000
PT4S-140/1200	250	165	25	60	419	233	245	106	85	65	47	7000
PT4S-140/1400	250	165	25	60	469	283	245	106	85	65	47	7000
PT4S-140/2000	250	165	25	60	619	433	245	106	85	65	47	7000
PT4S-160/1400	284	184	30	65	475	286	247	130	106	85	65	12500
PT4S-160/1730	284	184	30	65	557	369	247	130	106	85	65	12500
PT4S-160/2000	284	184	30	65	625	436	247	130	106	85	65	12500
PT4S-180/1400	320	210	35	65	475	286	247	145	120	97	75	14500
PT4S-180/1600	320	210	35	65	525	336	247	145	120	97	75	14500





Pmax=200 Kg/cm2



REFERENCIA	ØA	ØB	C	D	ØE	ØF	G	ØH	I	J	K	Fuerza(Kg) a P.=100 Bar
DE-20-32/50 CHB	20	32	50	205	40	16,2	35	30	28	17	1/4"G	800
DE-20-32/100 CHB	-	-	100	255	-	-	-	-	-	-	-	-
DE-20-32/150 CHB	-	-	150	305	-	-	-	-	-	-	-	-
DE-20-32/200 CHB	-	-	200	355	-	-	-	-	-	-	-	-
DE-20-32/300 CHB	-	-	300	455	-	-	-	-	-	-	-	-
DE-25-40/100 CHB	25	40	100	270	50	20,5	40	35	50	19	3/8"G	1.250
DE-25-40/200 CHB	-	-	200	370	-	-	-	-	-	-	-	-
DE-25-40/300 CHB	-	-	300	470	-	-	-	-	-	-	-	-
DE-25-40/300 CHB	-	-	300	470	-	-	-	-	-	-	-	-
DE-25-40/400 CHB	-	-	400	570	-	-	-	-	-	-	-	-
DE-25-40/500 CHB	-	-	500	670	-	-	-	-	-	-	-	-
DE-30-50/100 CHB	30	50	100	300	60	25,5	45	40	54	25	3/8"G	1.960
DE-30-50/200 CHB	-	-	200	400	-	-	-	-	-	-	-	-
DE-30-50/300 CHB	-	-	300	500	-	-	-	-	-	-	-	-
DE-30-50/400 CHB	-	-	400	600	-	-	-	-	-	-	-	-
DE-30-50/500 CHB	-	-	500	700	-	-	-	-	-	-	-	-
DE-30-50/600 CHB	-	-	600	800	-	-	-	-	-	-	-	-
DE-30-50/700 CHB	-	-	700	900	-	-	-	-	-	-	-	-
DE-30-60/100 CHB	30	60	100	300	70	25,5	45	40	54	25	3/8"G	2.820
DE-30-60/200 CHB	-	-	200	400	-	-	-	-	-	-	-	-
DE-30-60/300 CHB	-	-	300	500	-	-	-	-	-	-	-	-
DE-30-60/400 CHB	-	-	400	600	-	-	-	-	-	-	-	-
DE-30-60/500 CHB	-	-	500	700	-	-	-	-	-	-	-	-
DE-30-60/600 CHB	-	-	600	800	-	-	-	-	-	-	-	-
DE-30-60/700 CHB	-	-	700	900	-	-	-	-	-	-	-	-
DE-40-70/200 CHB	40	70	200	410	80	30,5	55	50	45	25	3/8"G	3.840
DE-40-70/300 CHB	-	-	300	510	-	-	-	-	-	-	-	-
DE-40-70/400 CHB	-	-	400	610	-	-	-	-	-	-	-	-
DE-40-70/500 CHB	-	-	500	710	-	-	-	-	-	-	-	-
DE-40-70/600 CHB	-	-	600	810	-	-	-	-	-	-	-	-
DE-40-70/700 CHB	-	-	700	910	-	-	-	-	-	-	-	-
DE-40-80/200 CHB	40	80	200	410	90	30,5	55	50	39	25	3/8"G	5.020
DE-40-80/300 CHB	-	-	300	510	-	-	-	-	-	-	-	-
DE-40-80/400 CHB	-	-	400	610	-	-	-	-	-	-	-	-
DE-40-80/500 CHB	-	-	500	710	-	-	-	-	-	-	-	-
DE-40-80/600 CHB	-	-	600	810	-	-	-	-	-	-	-	-
DE-40-80/700 CHB	-	-	700	910	-	-	-	-	-	-	-	-
DE-50-100/300 CHB	50	100	300	525	115	30,5	70	60	46	34	3/8"G	7.850
DE-50-100/400 CHB	-	-	400	625	-	-	-	-	-	-	-	-
DE-50-100/500 CHB	-	-	500	725	-	-	-	-	-	-	-	-
DE-50-100/700 CHB	-	-	700	925	-	-	-	-	-	-	-	-