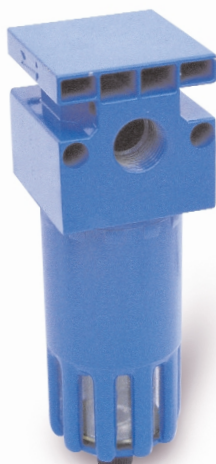
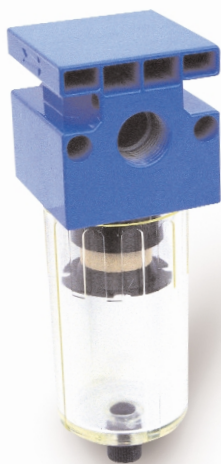


# FILTRO FILTER

Mod. AT-F

Mod. AT-FM



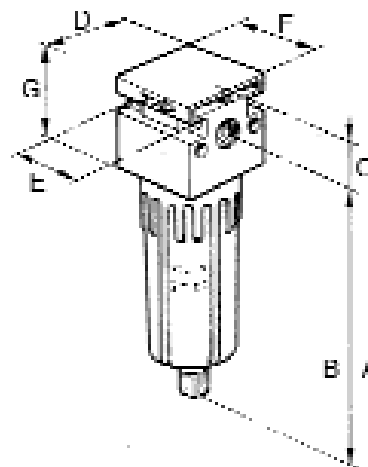
## COD.ORDINE - ORDER CODE      PREZZO - PRICE

mod.	filetto/thread	Lire	€
AT-F	1/8		
AT-F	1/4		
AT-F	3/8 - 1/2		
AT-FM	1/8		
AT-FM	1/4		
AT-FM	3/8 - 1/2		
AT-FM	3/4		
AT-FM	1"		

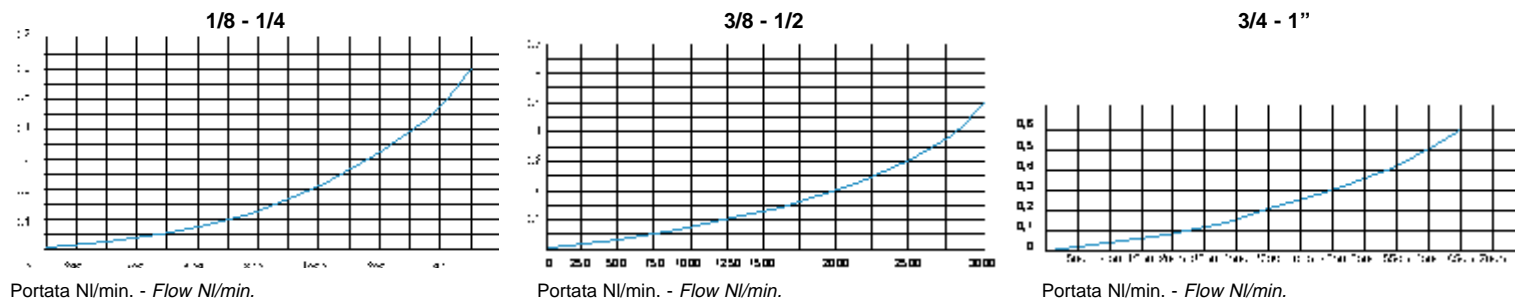
A richiesta scarico condensa automatico (vedere accessori) mod. SA  
By request automatic drainage system (see equipments) mod. SA

## DIMENSIONI - SIZE

mod.	AT-F/AT-FM 1/8 - 1/4	3/8 - 1/2	3/4 - 1"
A metal	117	149	195
B transparent	112	143	
C	21	30	40
D	42	60	80
E	32	46	66
G	42	60	80
F	42	60	80



## DIAGRAMMA DI PORTATA CON PRESSIONE A 6 bar - FLOW RATE DIAGRAM AT 6 bar



## DATI TECNICI - SPECIFICATIONS

	1/8 - 1/4	3/8 - 1/2	3/4 - 1"
Peso - weight	0.4 kg	0.9 kg	1.9 kg
Viti di fissaggio a parete - wall clamp screw	M4x40	M4x50	M6x75
Capacità tazza cm <sup>3</sup> - capacity of the cup cm <sup>3</sup>	13	47	175
Scarico condensa Condensate drainage system	di serie manuale / semiautomatico; a richiesta automatico (art. SA vedi accessori) manual / semi-automatic; by request automatic (art. SA - see equipments)		
Campo di regolazione bar - pressure adjusting range (bar)	0-12	0-12	0-12
Pressione max di ingresso (tazza metallo) Maximum inlet pressure (metal cup)	bar 18 - psi 261 - kPa 1800 - MPa 1.8		
Pressione max di ingresso (tazza trasparente) Maximum inlet pressure (transparent cup)	bar 12 - psi 174 - kPa 1200 - MPa 1.2		
Portata a 6 bar - flow rate at 6 bar (87 psi - 600 kPa - 0,6 MPa)	1150 NI/min	4300 NI/min	9600 NI/min
Temperatura max a - maximum temperature at 10 bar, 145 psi, 1000 kPa, 1MPa °C	+50	+50	+50
Grado di filtrazione - degree of filtration	32 µm		
Fluido - fluid	aria compressa - compressed air		
Posizione di montaggio - mounting position	verticale - vertical		