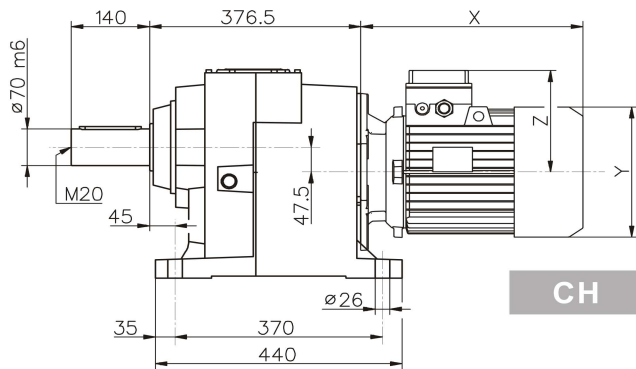
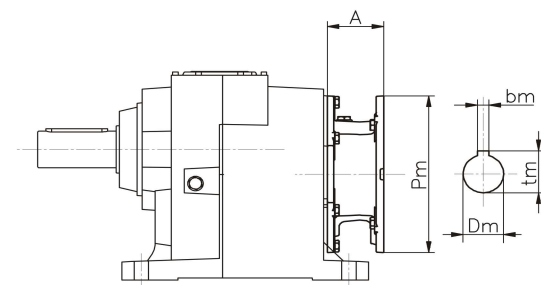
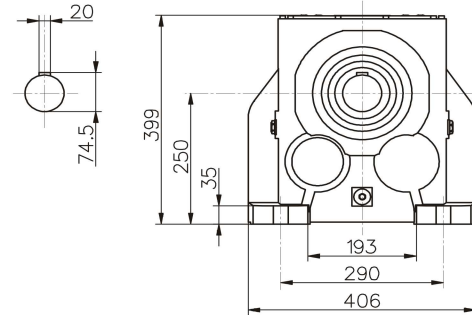


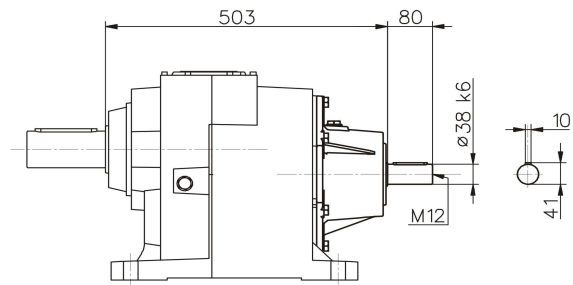
122/..3 Dimensioni / Dimensions / Abmessungen / Encombremets / Dimensiones



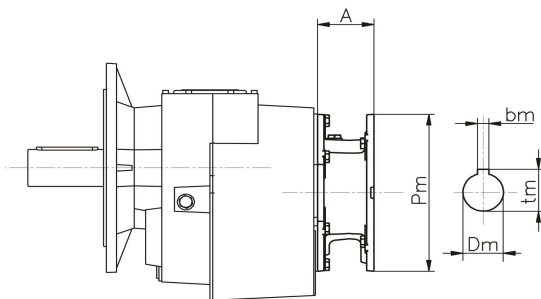
CH



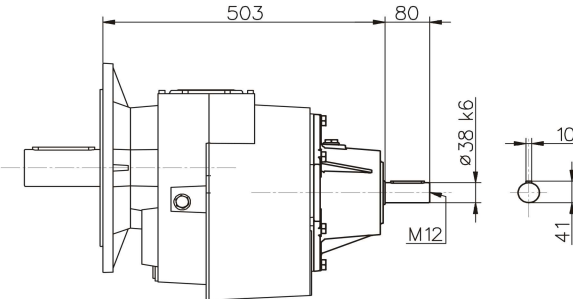
H



IH



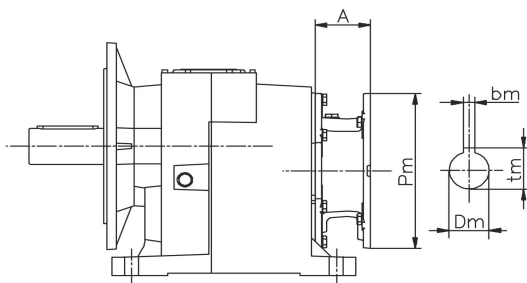
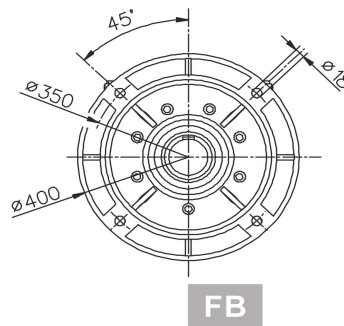
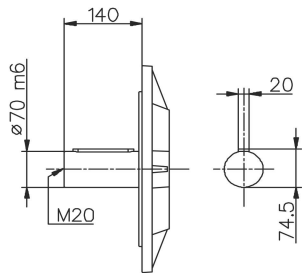
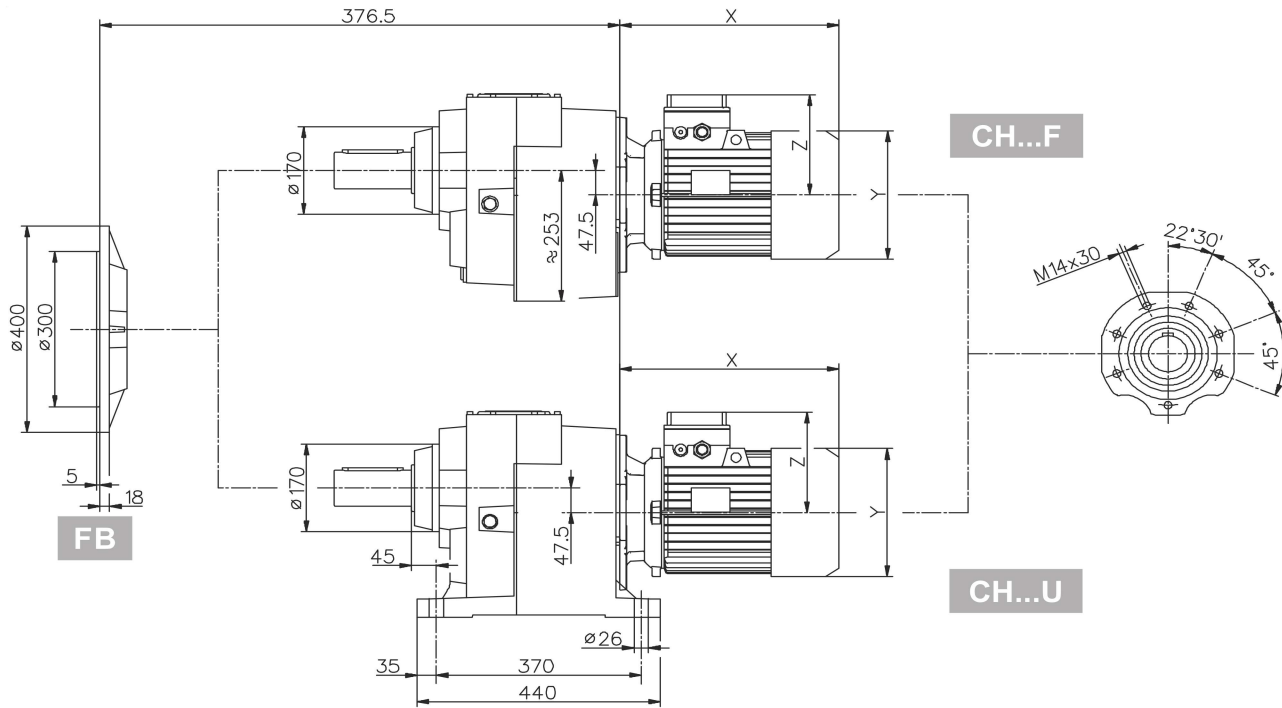
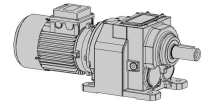
H...F FB



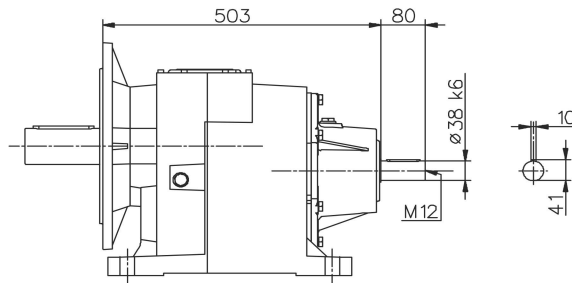
IH...F FB

125	IH	PAM		Motore normale / Standard motor / Normaler Motor / Moteur normal / Motor normal				Motore autofrenante / Brake motor / Bremsmotor / Moteur frein / Motor-freno			
	~Kg	A	~Kg	X	Y	Z	~Kg	X	Y	Z	~Kg
100	128,3	76	120,7	326	191	151	134,5	407	191	139	140
112		76	120,7	347	211	166	144,5	443	211	154	154,2
132s		101	123,5	386	249	206	159,5	485	249	194	169,8
132m		101	123,5	434	249	206	168,5	537	249	194	183,2
160s		148	129,5	540	310	256	-	-	-	-	-
160I		148	129,5	584	310	256	-	-	-	-	-
180		148	129,5	641	349	272	-	-	-	-	-
200		185	144,5	-	-	-	-	-	-	-	-

Per le dimensioni relative alla zona attacco motore (Pm, Dm, bm, tm) fare riferimento alla tabella di pag. 134.
 For the dimensions concerning the motor connection area (Pm, Dm, bm, tm) please refer to the table shown at page 134.
 Zu den Abmessungen des Motoranschlußflansches (Pm, Dm, bm, tm) siehe Tabelle auf Seite 134.
 Pour les dimensions concernant la zone de montage du moteur (Pm, Dm, bm, tm) lire SVP le tableau à la page 134.
 Para las magnitudes correspondientes a la zona del motor (Pm, Dm, bm, tm) consulte la tabla de la página 134.



H...U FB



IH...U FB