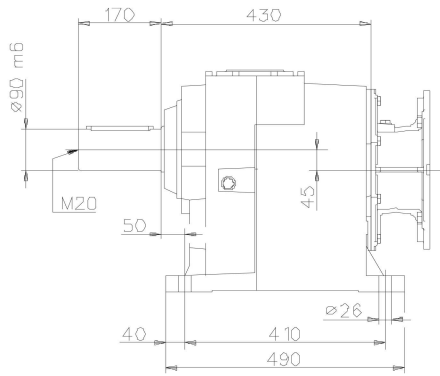
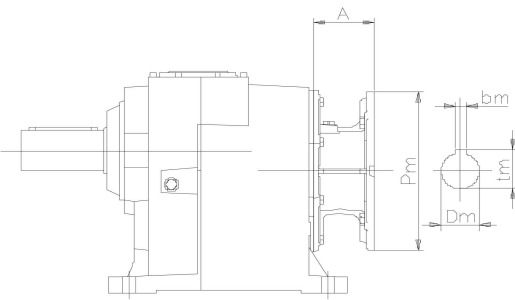
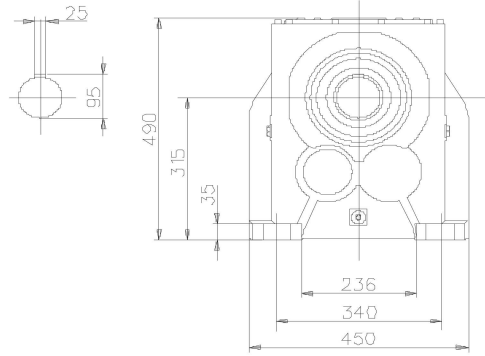


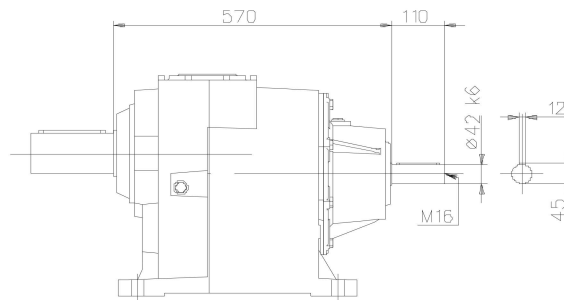
142/.3 Dimensioni / Dimensions / Abmessungen / Encombremets / Dimensiones



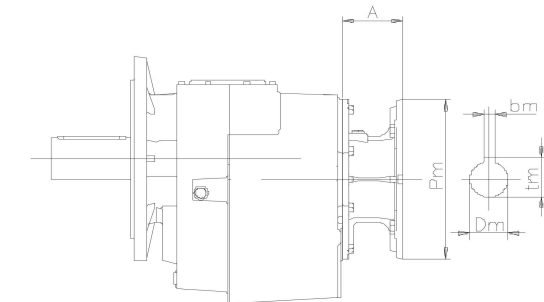
H



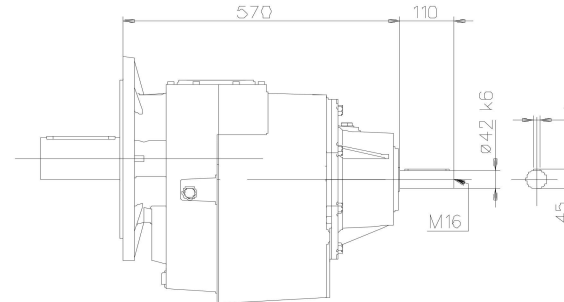
H



IH



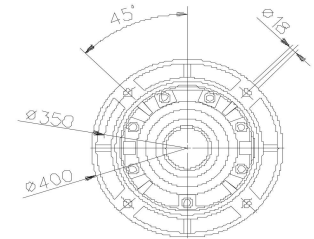
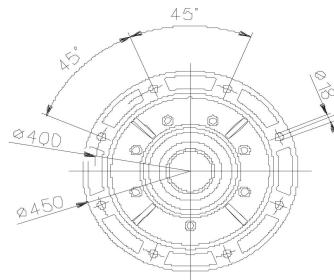
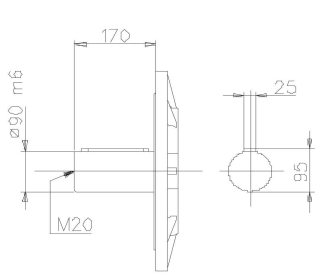
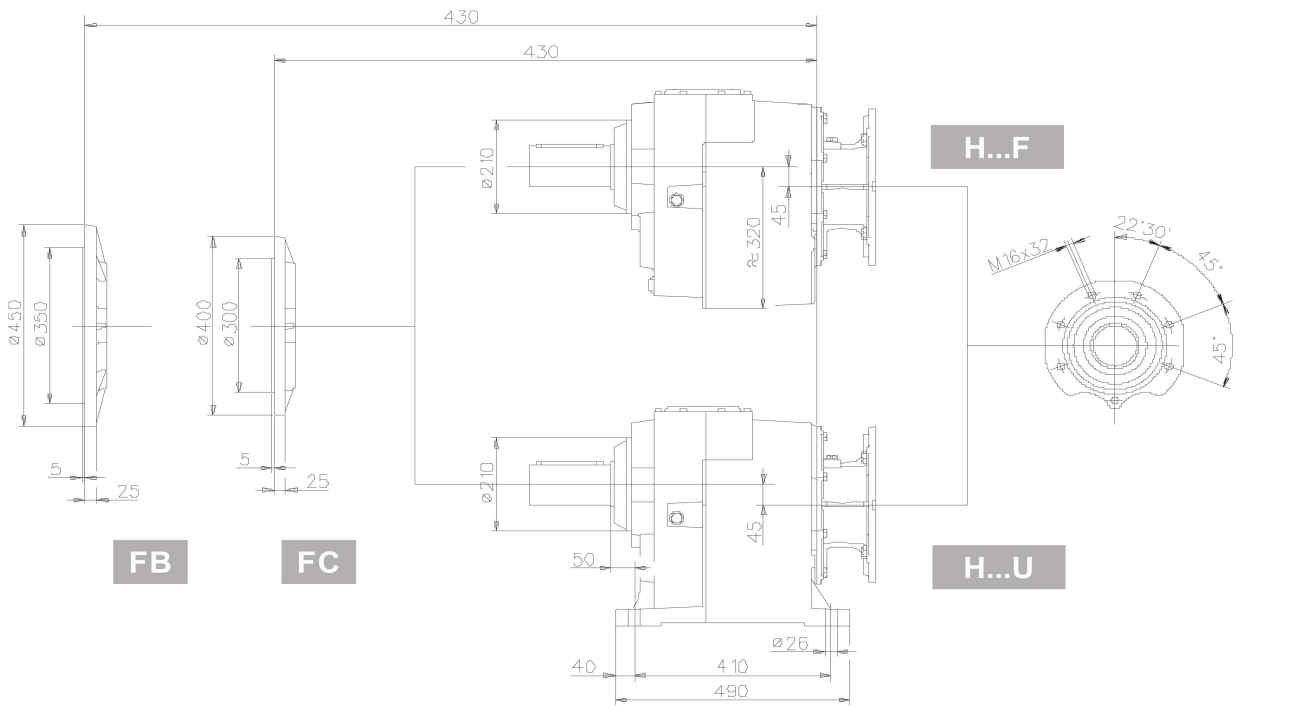
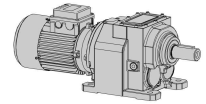
H...F FB-FC



IH...F FB-FC

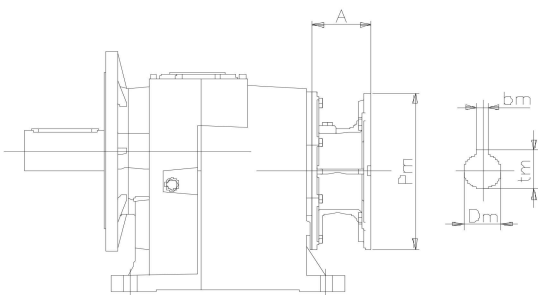
140	IH	PAM		Motore normale / Standard motor / Normaler Motor / Moteur normal / Motor normal			Motore autofrenante / Brake motor / Bremsmotor / Moteur frein / Motor-freno				
	~Kg	A	~Kg	X	Y	Z	~Kg	X	Y	Z	~Kg
132s	212,2	76	197,1	-	-	-	-	-	-	-	-
132m		76	197,1	-	-	-	-	-	-	-	-
160s		124	205	-	-	-	-	-	-	-	-
160I		124	205	-	-	-	-	-	-	-	-
180		124	205	-	-	-	-	-	-	-	-
200		161	219,2	-	-	-	-	-	-	-	-
225		161	221	-	-	-	-	-	-	-	-

Per le dimensioni relative alla zona attacco motore (Pm, Dm, bm, tm) fare riferimento alla tabella di pag. 134.
 For the dimensions concerning the motor connection area (Pm, Dm, bm, tm) please refer to the table shown at page 134.
 Zu den Abmessungen des Motoranschlußflansches (Pm, Dm, bm, tm) siehe Tabelle auf Seite 134.
 Pour les dimensions concernant la zone de montage du moteur (Pm, Dm, bm, tm) lire SVP le tableau à la page 134.
 Para las magnitudes correspondientes a la zona del motor (Pm, Dm, bm, tm) consulte la tabla de la página 134.

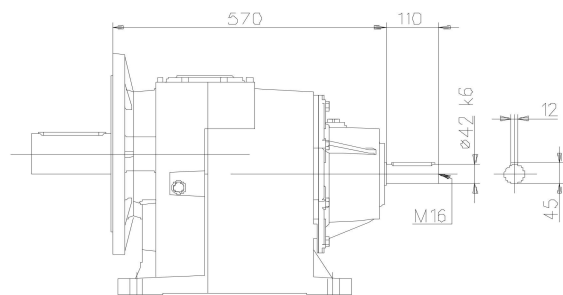


FB

FC



H...U FB-FC



IH...U FB-FC