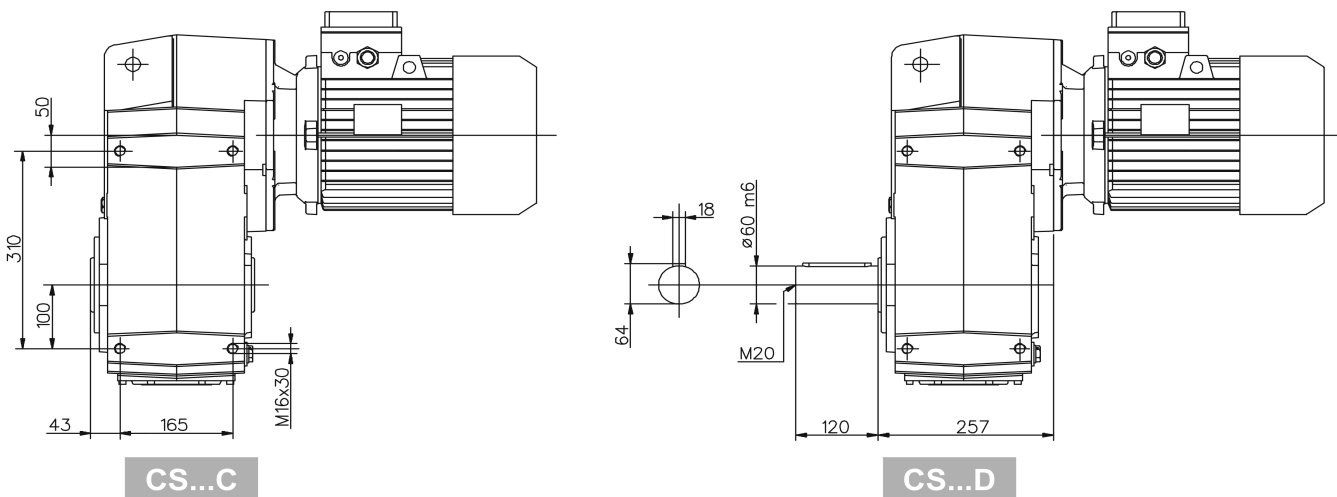
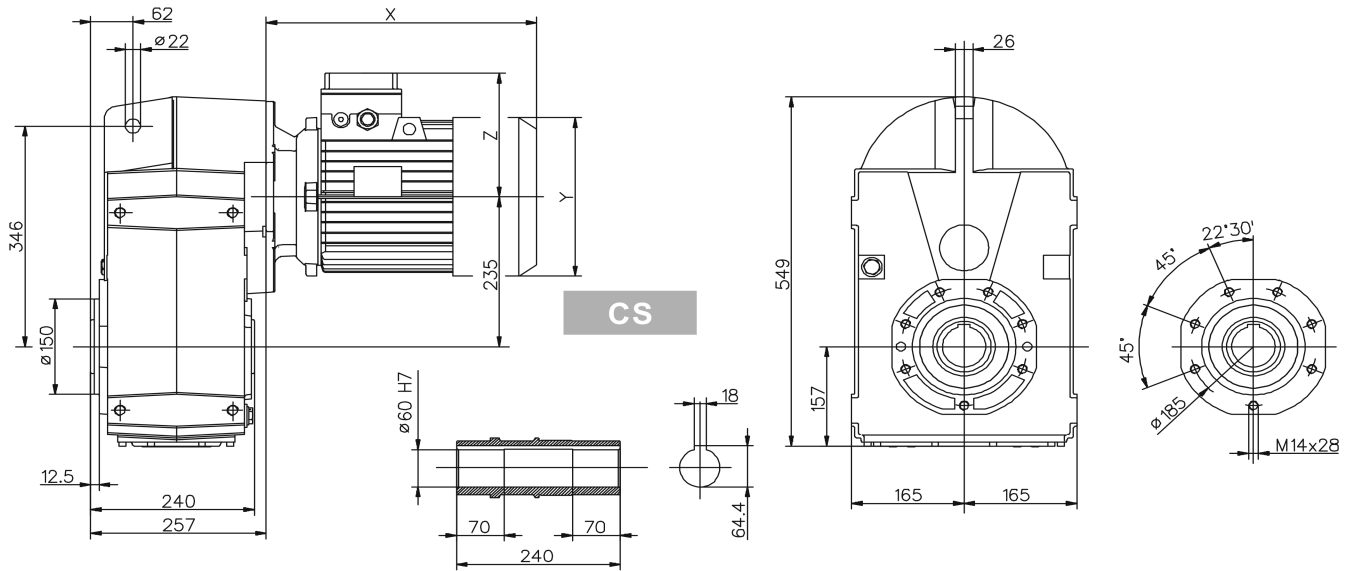
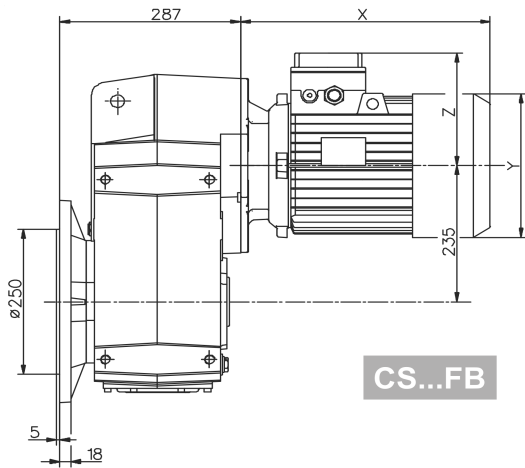
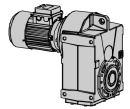


**122/.3** Dimensioni / Dimensions / Abmessungen / Encombremets / Dimensiones

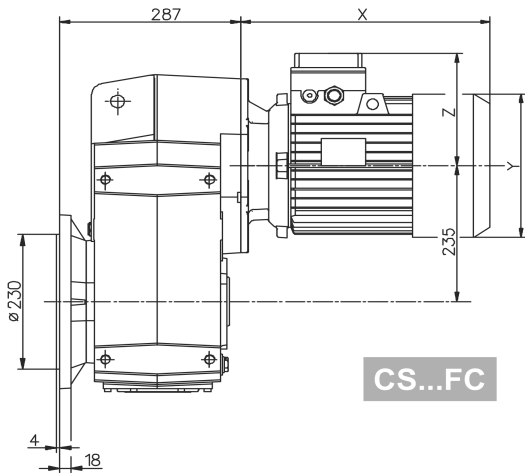
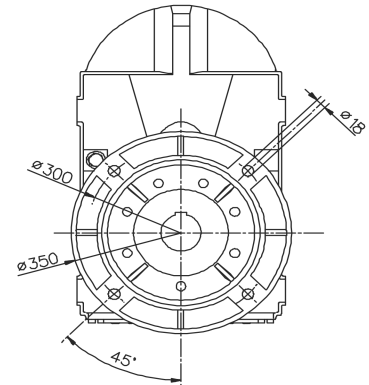
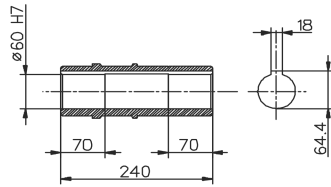


125	IS	PAM		Motore normale / Standard motor / Normaler Motor / Moteur normal / Motor normal				Motore autofrenante / Brake motor / Bremsmotor / Moteur frein / Motor-freno			
	~Kg	A	~Kg	X	Y	Z	~Kg	X	Y	Z	~Kg
80	91.8	61	82	-	-	-	-	-	-	-	-
90s		61	82	267	173	130	91	343	173	130	96.5
90l		61	82	292	173	130	92	368	173	130	97.5
100		76	84.2	326	191	139	98	407	191	139	103.5
112		76	84.2	347	211	154	108	443	211	154	117.7
132s		101	87	386	249	194	123	485	249	194	133.3
132m		101	87	434	249	194	132	537	249	194	146.7
160s		148	93	540	310	244	-	-	-	-	-
160l		148	93	584	310	244	-	-	-	-	-
180		148	93	641	349	260	-	-	-	-	-
200	185	108	-	-	-	-	-	-	-	-	

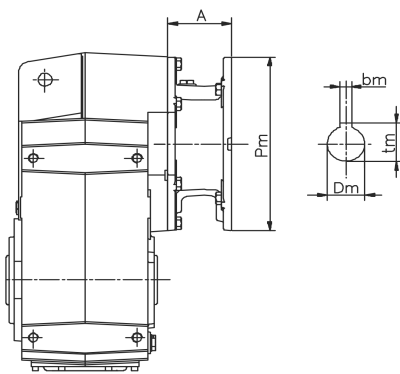
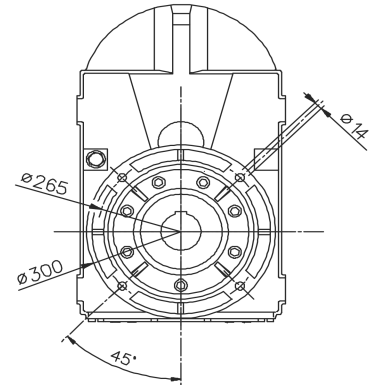
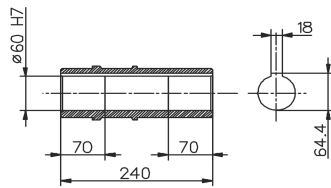
Per le dimensioni relative alla zona attacco motore (Pm, Dm, bm, tm) fare riferimento alla tabella di pag. 223.  
 For the dimensions concerning the motor connection area (Pm, Dm, bm, tm) please refer to the table shown at page 223.  
 Zu den Abmessungen des Motoranschlußflansches (Pm, Dm, bm, tm) siehe Tabelle auf Seite 223.  
 Pour les dimensions concernant la zone de montage du moteur (Pm, Dm, bm, tm) lire SVP le tableau à la page 223.  
 Para las magnitudes correspondientes a la zona del motor (Pm, Dm, bm, tm) consulte la tabla de la página 223.



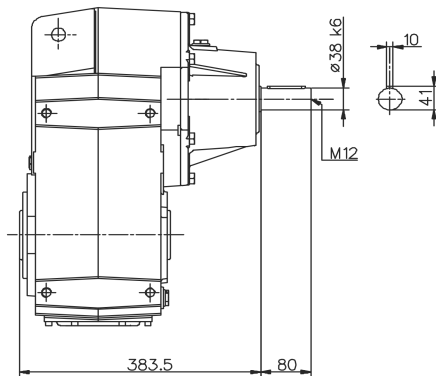
**CS...FB**



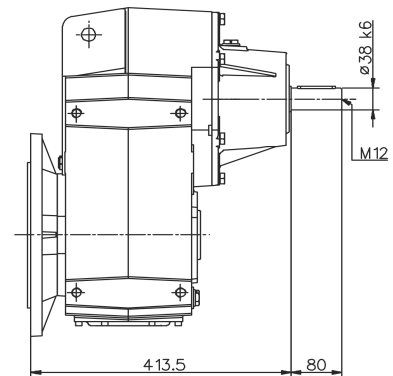
**CS...FC**



**S...C**



**IS...C**



**IS...FB - FC**